



The Industry Leader in Burnishing
Adamation Burnishers are in use in nearly every country of the world, and have been the standard of the industry for over 40 years.

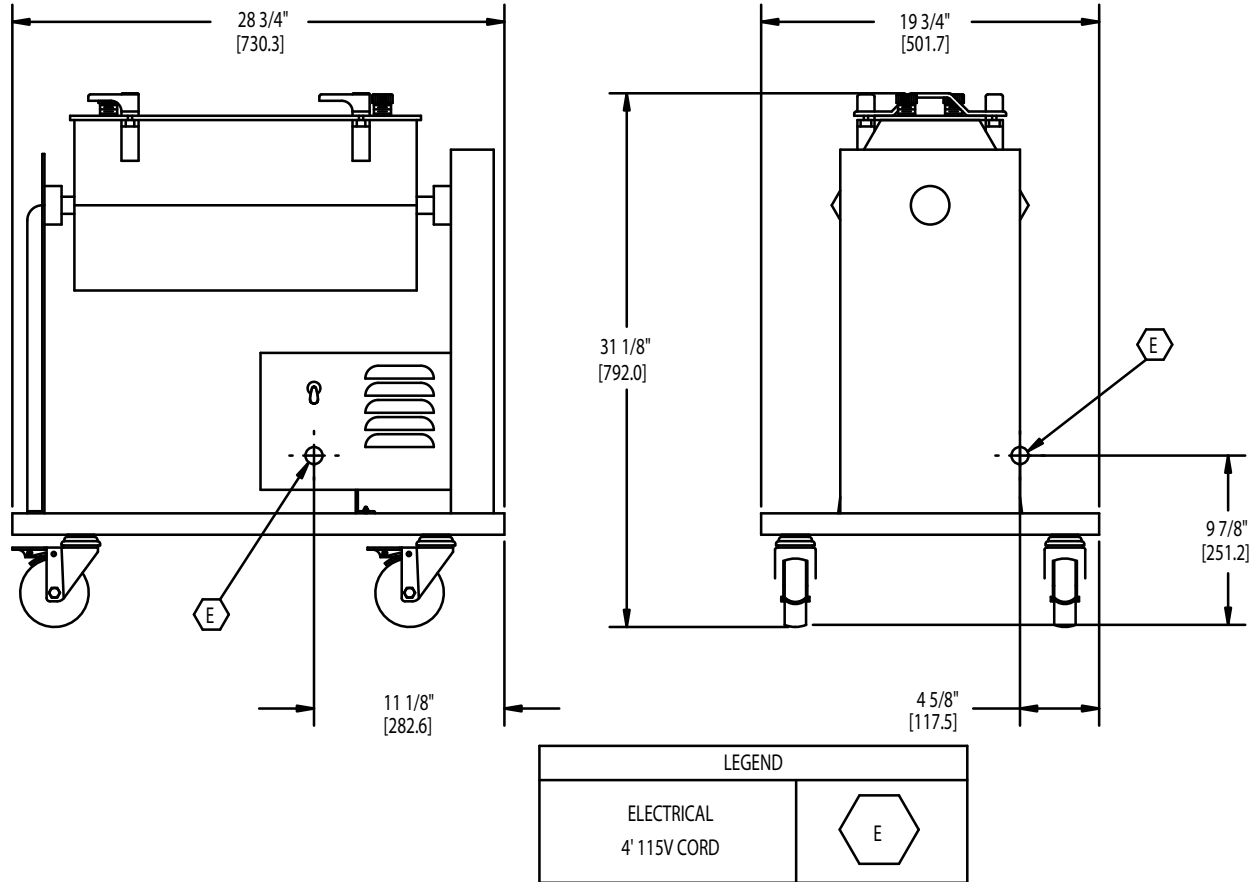
ABR-200 *formerly model #EG-2*

Rotary Silverware Burnisher

Rated capacity of 200 pcs. of flatware, 75 lbs. of media. Ideal for moderate-sized dining establishments and country clubs.

STANDARD FEATURES

- **Vinyl Coated Hexagonal Rotary Drum**
Cushions silver and reduces noise. Hexagonal shape creates "slide zone" to gently roll away scratches.
- **Stainless Steel Construction**
For long life and easy maintenance in any environment.
- **Quick-acting Hand Release Latches**
Speeds loading and unloading of flatware.
- **Standard 110v Operation**
Plugs into any standard electrical outlet.
(50 cycle model available for overseas use).
- **Hardened Steel Polishing Media**
Includes 75 lbs. of burnishing balls and 1 gal. burnishing liquid.
- **Detachable Fill and Drain Hoses**
Easily attach to faucet to fill - drains into sink when finished.



Specifications

Flatware Capacity	Media Capacity	Burnishing Compound	Crate Size	Ship Weight
200 pcs.	75 lbs.	1 gal.	12.9 cu. ft.	approx. 265 lbs.

Electrical Requirements

Current (V/Ph/Cyc)	Amps
115 / 1 / 60	5.7
115 / 1 / 50	6.3
230 / 1 / 60	2.8
230 / 1 / 50	3.1