

Built-in accessories mini-catalog

Solutions for fast food, c-store, and coffee shop cabinets and fixtures



**DISPENSE-RITE®**

MBH International Sales, Inc.  
sales@mbhny.com

# THE *RITE* DISPENSER FOR EVERY APPLICATION

PRECISION ADJUSTMENT CLIPS

INTERCHANGEABLE SILICONE BAFFLES

ONE-SIZE-FITS-ALL

ABS PLASTIC CONSTRUCTION

STAINLESS STEEL CONSTRUCTION

NSF LISTED

**DISPENSE-RITE** quality cup dispensers are offered with three alternative dispensing mechanisms in either ABS plastic or stainless steel.

STL Series and ADJ Series cup dispensers utilize a precision three clip adjustment mechanism to ensure the exacting fit for a particular cup or container size.

SLR Series and BFL Series cup dispensers utilize an interchangeable baffle gasket system for operators preferring the simplicity of a self-adjusting dispenser.

SLR-LID Series lid dispensers utilize a polycarbonate front cover to provide lid dispensing simplicity with no adjustment required.

Dispensers are provided with calibrated compression springs and require no rear fabrication for mounting. All models are NSF Listed.

## STL SERIES



### STL SERIES ABS PLASTIC ADJUSTABLE CUP DISPENSERS

Our exclusive precision adjustment mechanism allows simple and fast adjustment of these dispensers to accommodate a range of cup sizes from 8 oz. to 44 oz. Quality ABS plastic construction provides an economical dispensing solution. Innovative design allows the dispenser to be easily adjusted in the counter without the use of tools.

**DISPENSE-RITE**  
simple and fast  
precision adjustment  
mechanism



## SLR SERIES



### SLR SERIES ABS PLASTIC INTERCHANGEABLE BAFFLE CUP DISPENSERS

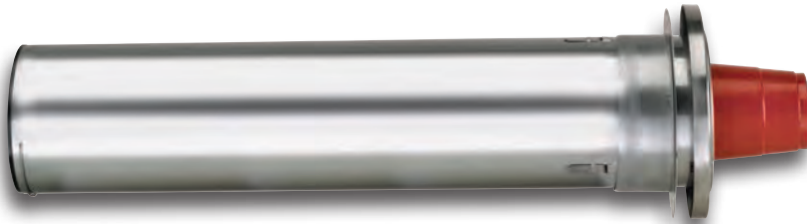
Our interchangeable baffle system accommodates a full range of cup sizes from 4 oz. to 44 oz. Quality ABS plastic construction provides an economical dispensing solution. Innovative design allows the baffle to be easily replaced without removing from the counter. No adjustment is required with any of the SLR Series interchangeable baffle cup dispensers.

**DISPENSE-RITE**  
interchangeable  
baffle gasket  
system



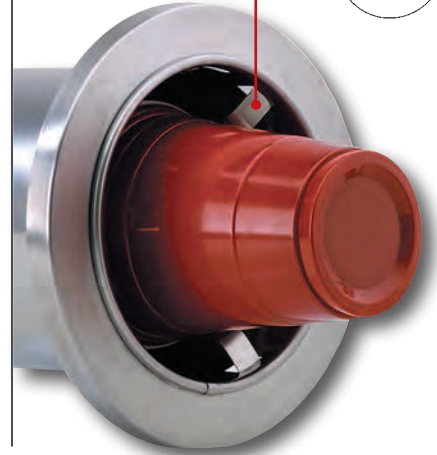
## ▽ CUP & LID DISPENSER PRODUCT OVERVIEW

### ADJ SERIES



**DISPENSE-RITE**  
exclusive spring-clip  
precision adjustment  
mechanism

**NSF.**



### ADJ SERIES STAINLESS STEEL ADJUSTABLE CUP DISPENSERS

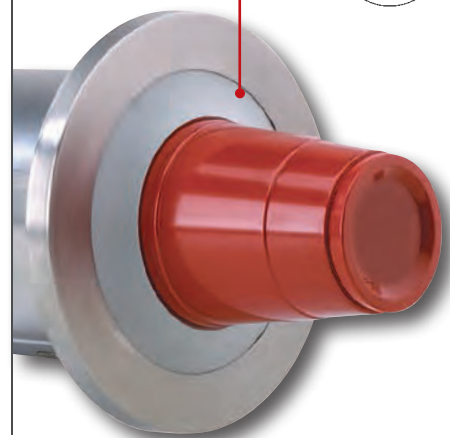
Our exclusive precision adjustment mechanism allows simple and fast adjustment of these dispensers to accommodate a full range of cup sizes from 4 oz. to 64 oz. This unique dispenser design utilizes three stainless steel spring clips to combine a full range of adjustment with long-term cup dispensing reliability.

### BFL SERIES



**DISPENSE-RITE**  
interchangeable  
baffle gasket  
system

**NSF.**



### BFL SERIES STAINLESS STEEL INTERCHANGEABLE BAFFLE CUP DISPENSERS

Our interchangeable baffle system accommodates a full range of cup sizes from 8 oz. to 64 oz. The silicone rubber baffles are made from the highest quality materials available. No adjustment is required with any of the BFL Series interchangeable baffle cup dispensers.

### SLR-LID SERIES



**DISPENSE-RITE**  
lid dispenser  
design requires  
no adjustment

**NSF.**



### SLR-LID SERIES ABS PLASTIC SPRING LOADED LID DISPENSERS

Lid dispensers are designed to combine simplicity with dependability for long-term reliability and maximum cost savings. This sanitary beverage lid dispenser requires no adjustment and is available for a variety of in-counter and countertop applications. Lid stacks are enclosed to protect from potential contamination due to spills, splashes and sneezes.



FMVL-1



FMVL-2



FMVL-3



FMVL-4



FMVDL-3

TEXTURED BLACK POLYSTYRENE CONSTRUCTION



FMVS-1BT



FMVS-1



FMN-1BT

Model Number	Item Description	Dimensions H x W x D	Cut-Out Dimensions
FMVL-1	Built-in 1 Section Lid Organizer	7" x 7" x 5½"	5¼" x 5½"
FMVL-2	Built-in 2 Section Lid Organizer	18" x 7" x 5½"	16¼" x 5½"
FMVL-3	Built-in 3 Section Lid Organizer	26" x 7" x 5½"	24½" x 5½"
FMVL-4	Built-in 4 Section Lid Organizer	33¾" x 7" x 5½"	32¾" x 5½"
FMVDL-3	Built-in 3 Section Dome Lid & Straw Organizer	26" x 7" x 8"	24½" x 5½"
FMTS-1BT	Built-in 1 Section Straw Organizer	6¼" x 11½" x 5½"	5½" x 10½"
FMVS-1	Built-in 1 Section Straw Organizer	6" x 7" x 12¼"	4½" x 5½"
FMN-1BT	Built-in Dispenser - 4½"-5" x 6½" Napkins	6¼" x 8½" x 5½"	5¼" x 7½"



FML-2



FML-3



FML-4



FMC-4



FMC-7

GLOSS BLACK ACRYLIC CONSTRUCTION



FMN-1



FMN-2

GLOSS BLACK ACRYLIC CONSTRUCTION

Model Number	Item Description	Dimensions H x W x D	Cut-Out Dimensions
FML-2	Built-in 2 Section Lid Organizer	7¼" x 11" x 5¾"	6¼" x 10"
FML-3	Built-in 3 Section Lid Organizer	7¼" x 16" x 5¾"	6¼" x 15"
FML-4	Built-in 4 Section Lid Organizer	7¼" x 21" x 5¾"	6¼" x 20"
FMC-4	Built-in 4 Section Condiment Organizer	7¼" x 12" x 5¾"	6¼" x 11"
FMC-7	Built-in 7 Section Condiment Organizer	7¼" x 20" x 5¾"	6¼" x 19"
FMN-1	Built-in Dispenser - 4½"-5" x 6½" Napkins	6¼" x 8½" x 5½"	5¼" x 7½"
FMN-2	Built-in Dispenser - 3½"-4" x 6½" Napkins	5¼" x 8½" x 5½"	4¼" x 7½"

▽ **BUILT-IN FLUSH MOUNT FLATWARE ORGANIZERS**



**FMSH-2BT**



**FMSH-3BT**

**FMSH SERIES BUILT-IN FLUSH MOUNT FLATWARE ORGANIZERS**

Built-in flatware organizers feature durable polystyrene construction.

Includes removable perforated plastic inserts which can hold plastic cutlery, silverware or condiment packets.

Model Number	Item Description	Dimensions H x W x D	Cut-Out Dimensions
FMSH-2BT	2 Section Flatware Organizer	7½" x 12⅞" x 8¾"	6¾" x 11⅞"
FMSH-3BT	3 Section Flatware Organizer	7½" x 17⅞" x 8¾"	6¾" x 16⅞"

▽ **BUILT-IN FLUSH MOUNT STRAW ORGANIZERS**



**FMVS-2SBT**



**FMVS-2LBT**

**FMVS SERIES BUILT-IN FLUSH MOUNT STRAW ORGANIZERS**

Built-in straw organizers feature durable polystyrene construction.

Available for standard and jumbo length straws.

Model Number	Item Description	Dimensions H x W x D	Cut-Out Dimensions
FMVS-2SBT	2 Section Standard Straw Organizer	7¼" x 6½" x 9½"	6⅝" x 5⅝"
FMVS-2LBT	2 Section Jumbo Straw Organizer	7¼" x 6½" x 11"	6⅝" x 5⅝"

**BLACK POLYSTYRENE CONSTRUCTION**

## ▽ BUILT-IN FLUSH MOUNT TRASH DOORS



FMTD-1BT



FMTD-2BT



FMTD-3BT

### FMTD SERIES BUILT-IN FLUSH MOUNT TRASH DOORS

Built-in trash doors feature quality polystyrene construction. Units have smooth edges and a gravity fed self closing door.

Trash doors are available in small, medium and large widths for a variety of counter configurations.

Model Number	Item Description	Dimensions H x W x D	Cut-Out Dimensions
FMTD-1BT	Built-in Small Flush Mount Trash Door	7½" x 10⅝" x 2¼"	6⅞" x 9⅓⅛"
FMTD-2BT	Built-in Medium Flush Mount Trash Door	7½" x 13¼" x 2¼"	6⅞" x 12⅝⅛"
FMTD-3BT	Built-in Large Flush Mount Trash Door	7½" x 17⅝" x 2¼"	6⅞" x 16⅓⅛"

## ▽ BUILT-IN FLUSH MOUNT RECYCLE DOORS



FMRD-1BT



FMRD-2BT



FMRD-3BT

### FMRD SERIES BUILT-IN FLUSH MOUNT RECYCLE DOORS

Built-in recycle doors feature quality polystyrene construction. Units have smooth edges and a gravity fed self closing door.

Recycle doors are available in small, medium and large widths for a variety of counter configurations.

Model Number	Item Description	Dimensions H x W x D	Cut-Out Dimensions
FMRD-1BT	Built-in Small Flush Mount Recycle Door	7½" x 10⅝" x 2¼"	6⅞" x 9⅓⅛"
FMRD-2BT	Built-in Medium Flush Mount Recycle Door	7½" x 13¼" x 2¼"	6⅞" x 12⅝⅛"
FMRD-3BT	Built-in Large Flush Mount Recycle Door	7½" x 17⅝" x 2¼"	6⅞" x 16⅓⅛"

BLACK POLYSTYRENE CONSTRUCTION

## ▽ BUILT-IN FLUSH MOUNT TISSUE DISPENSER & BAG ORGANIZER

### FMT-1BT BUILT-IN FLUSH MOUNT TISSUE DISPENSER

Built-in tissue dispenser features quality polystyrene construction. Accepts most midget size waxed paper tissues. Two box system combines easy loading and simple installation in the counter.



FMT-1BT



FMB-1BT

### FMB-1BT BUILT-IN FLUSH MOUNT BAG ORGANIZER

Built-in bag organizer features quality polystyrene construction. Two compartment organizer accepts a variety of bags up to 9" wide.

Model Number	Item Description	Dimensions H x W x D	Cut-Out Dimensions
FMT-1BT	Built-in Flush Mount Tissue Dispenser	8" x 8¼" x 3½"	7½" x 7⅞"
FMB-1BT	Built-in Flush Mount Bag Organizer	7½" x 10⅝" x 11½"	5¼" x 9⅞"

## ▽ DROP-IN TRASH CHUTES



TTC-2BT



TTC-3BT



TTC-4BT

Model Number	Item Description	Dimensions H x Diameter	Cut-Out Dimensions
TTC-2BT	Drop-in Small Trash Chute	6⅞" x 7¼"	6¼"
TTC-3BT	Drop-in Medium Trash Chute	6⅞" x 9¼"	8¼"
TTC-4BT	Drop-in Large Trash Chute	6⅞" x 11¼"	10¼"

### TTC SERIES TRASH CHUTES

Drop-in trash chutes feature quality polystyrene construction. Units have smooth edges and an open bottom.

Units are available in small, medium and large diameter sizes for a variety of counter configurations and trash receptacle sizes.

BLACK POLYSTYRENE CONSTRUCTION



▽ **BUILT-IN NAPKIN DISPENSERS**

STAINLESS STEEL CONSTRUCTION



**CMND-1V**

**CMND SERIES BUILT-IN  
FULL FOLD NAPKIN DISPENSERS**

Built-in napkin dispensers feature quality stainless steel construction.

Units are available for horizontal or vertical dispensing applications.

The CMND Series dispenses full fold napkin sizes 4½"–5" x 6½".



**CMND-1**

Model Number	Item Description	Dimensions H x W x D	Cut-Out Dimensions
CMND-1V	Built-in Vertical Napkin Dispenser	6⅞" x 8¾" x 12⅞"	5¼" x 7"
CMND-1	Built-in Horizontal Napkin Dispenser	6⅞" x 8¾" x 12⅞"	5¼" x 7"

## ▽ DROP-IN CONDIMENT & STRAW ORGANIZERS

**TCD  
SERIES**

### TCD SERIES & TSD-1C CONDIMENT & STRAW ORGANIZERS

Condiment and straw organizers feature quality stainless steel construction.

The TCD Series units have a welded bottom cap which eliminates sharp edges. These units are designed for a drop in application.

The TSD-1C includes a stainless quick release mounting collar for secure installation in the counter.



**TCD-1**



**TCD-2**



**TSD-1C**

Model Number	Item Description	Dimensions H x Diameter	Cut-Out Dimensions
TCD-1	Drop-in Small Condiment Holder	6¼" x 6¾"	5⅝"
TCD-2	Drop-in Large Condiment Holder	6¼" x 7⅝"	6¼"
TSD-1C	Built-in Straw Holder with Mounting Collar	6" x 5⅝"	4"

## ▽ DROP-IN TRASH CHUTES



**TCD-2-NB**

Hemmed bottom, no sharp edges



**TCD-3-NB**



Top View

### TCD SERIES TRASH CHUTES

Drop-in trash chutes feature quality stainless steel construction.

All units have smooth edges and a hemmed bottom eliminates any potential for sharp edges.

Units are available in small and medium diameter sizes.

Model Number	Item Description	Dimensions H x Diameter	Cut-Out Dimensions
TCD-2-NB	Drop-in Small Trash Chute	6" x 7⅝"	6¼"
TCD-3-NB	Drop-in Medium Trash Chute	6" x 9⅝"	8¼"

STAINLESS STEEL CONSTRUCTION

# PRECISION ADJUSTMENT DISPENSING FLEXIBILITY

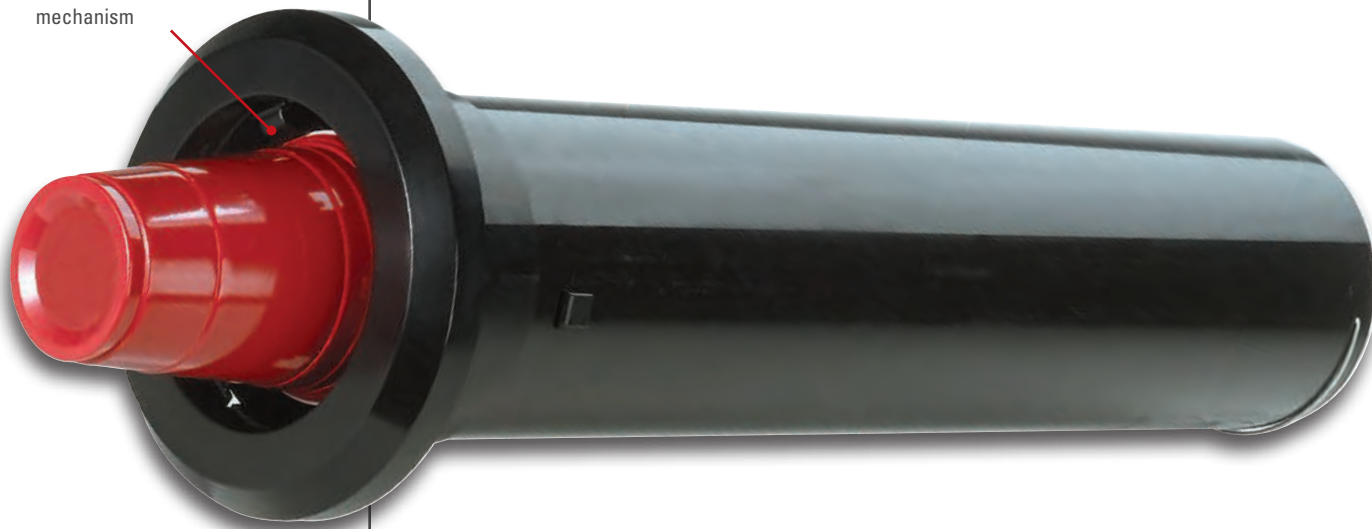
ABS PLASTIC CONSTRUCTION

## STL SERIES **ONE-SIZE-FITS-ALL** IN-COUNTER ADJUSTABLE CUP DISPENSERS

**DISPENSE-RITE** STL Series cup dispensers feature quality ABS plastic construction combined a simple and fast tool free adjustment mechanism to adjust for cup sizes ranging from 8 oz. to 44 oz.

A calibrated compression spring ensures one at a time dispensing in horizontal, angled or vertical mounting positions. The integrated mounting collar fully supports the dispenser in horizontal, angled or vertical mounting positions; no additional support is necessary. All models are NSF listed.

**DISPENSE-RITE**  
simple and fast  
precision adjustment  
mechanism



**DISPENSE-RITE's** precision three clip adjustment mechanism allows the dispenser to be adjusted without using hand tools or removing from the counter. This dispenser offers simple and fast adjustment for a full range of cup sizes.



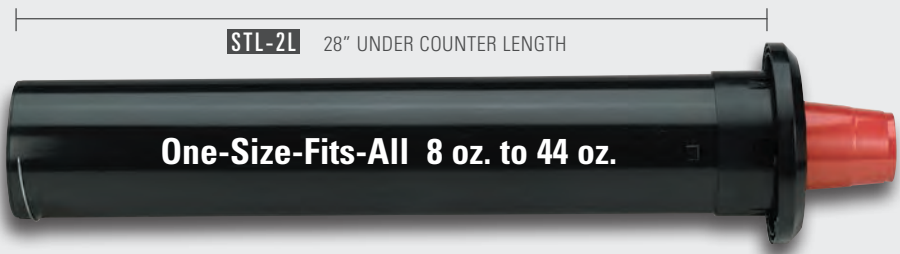
The **STL-2** is a **One-Size-Fits-All** model that offers maximum dispensing flexibility. This unit is designed to accommodate a variety of 8 oz. to 44 oz. paper, plastic or foam cups with rim diameters ranging in size from 3 1/8"–4 1/2". This model comes in three under counter lengths: 22", 17" and 28". The STL-2 models require a 5 1/4" hole cut-out.



Model Number	Cup Rim Diameter Range	Under Counter Length	Ring Bezel Diameter	Mounting Hole Cut-Out
STL-2	3 1/8"–4 1/2"	22"	7 1/8"	5 1/4"
STL-2S	3 1/8"–4 1/2"	17"	7 1/8"	5 1/4"
STL-2L	3 1/8"–4 1/2"	28"	7 1/8"	5 1/4"

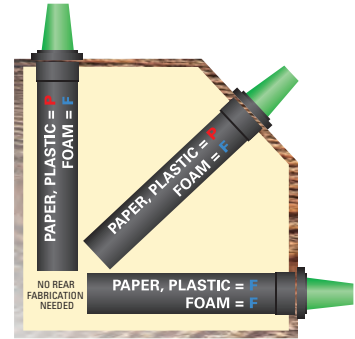
**STL-2, STL-2S AND STL-2L ONE-SIZE-FITS-ALL**  
**IN-COUNTER ADJUSTABLE CUP DISPENSERS**

These dispensers accommodate a variety of 8 oz. to 44 oz. paper, plastic or foam cups with rim diameters ranging in size from 3 1/8" – 4 1/2". The STL-2 models require a 5 1/4" hole. With three under counter lengths to choose from the STL-2 cup dispenser can be ordered to suit your particular installation requirements.



- Models above ship with 2 different compression springs: "F" & "P". See spring configuration chart in upper right for more details.
- Ounce capacities are provided for reference only. Always verify cup rim diameter prior to ordering.

Spring Configurations ▽



Cup Type	Position	Spring
Foam Cups	: Any Position	: <b>F</b> Spring
Paper Cups	: Horizontal	: <b>F</b> Spring
Plastic Cups	: Horizontal	: <b>F</b> Spring
Paper Cups	: Angled	: <b>P</b> Spring
Plastic Cups	: Angled	: <b>P</b> Spring
Paper Cups	: Vertical	: <b>P</b> Spring
Plastic Cups	: Vertical	: <b>P</b> Spring

Dispensers ship with both the "F" and "P" compression springs. Single spring models are available; see price list for additional information.

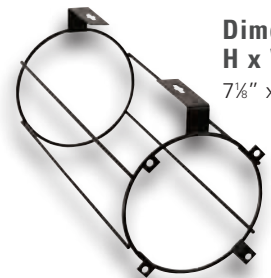
Color Ring Bezels ▽

Optional colored ring bezels are available in this popular color:



- SILVER SATIN (stainless faux finish)

Under Counter Bracket ▽



**Dimensions**  
**H x W x D**  
7 1/2" x 6" x 15 1/4"

The optional **STL-2-SMB** wire surface mount bracket mounts to any flat surface or wire shelf and allows you to mount a STL-2 cup dispenser in horizontal, vertical or angled positions. Maximum counter lip is 1/2".

GREAT FOR MOUNTING IN-COUNTER CUP DISPENSERS UNDER THE COUNTER



**UCMB-2BT**

The optional UCMB-2BT under counter mounting bracket is shown here with two STL-2 Series in-counter cup dispensers.

UCMB Series mounting brackets are available for the installation of one, two or three in-counter cup dispensers.

See page 60 for complete product specifications on the UCMB Series.

# SELF ADJUSTING DISPENSING FLEXIBILITY

## SLR SERIES IN-COUNTER INTERCHANGEABLE BAFFLE CUP DISPENSERS

**DISPENSE-RITE** SLR Series cup dispensers feature quality ABS plastic construction combined with an interchangeable silicone baffle gasket system to accommodate a full range of cup sizes from 4 oz. to 44 oz.

A calibrated compression spring ensures one at a time dispensing in horizontal, angled or vertical mounting positions. The integrated mounting collar fully supports the dispenser in horizontal, angled or vertical mounting positions; no additional support is necessary. All models are NSF listed.

**DISPENSE-RITE**  
interchangeable baffle  
gasket system



The **SLR-1** is a **Slim-Line** model that is ideal for smaller cup sizes and tight spaces. The SLR-1 accepts 4 oz. to 24 oz. paper, plastic or foam cups with rim diameters from 2½"–3⅞". The SLR-1 model requires a 4½" hole cut-out and is great for many retrofit applications as it combines dispensing flexibility with space savings.



The **SLR-2** is a **One-Size-Fits-All** model that offers maximum dispensing flexibility. This dispenser is designed to accommodate a variety of 8 oz. to 44 oz. paper, plastic or foam cups with rim diameters ranging in size from 3"–4½". This model comes in three under counter lengths: 22", 17" and 28". The SLR-2 models require a 5¼" hole.



Model Number	Cup Rim Diameter Range	Under Counter Length	Ring Bezel Diameter	Mounting Hole Cut-Out
SLR-1	2½"–3⅞"	22"	6⅞"	4½"
SLR-1S	2½"–3⅞"	17"	6⅞"	4½"
SLR-2	3"–4½"	22"	7⅞"	5¼"
SLR-2S	3"–4½"	17"	7⅞"	5¼"
SLR-2L	3"–4½"	28"	7⅞"	5¼"

ABS PLASTIC CONSTRUCTION

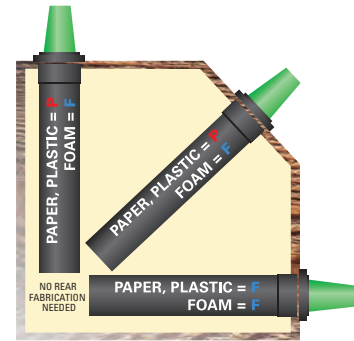
▽ IN-COUNTER INTERCHANGEABLE BAFFLE CUP DISPENSERS

**SLR-1 AND SLR-1S SLIM-LINE**  
**IN-COUNTER INTERCHANGEABLE BAFFLE CUP DISPENSERS**

The SLR-1 accepts a variety of 4 oz. to 24 oz. paper, plastic or foam cups with rim diameters from 2½"–3⅞". This model requires a 4½" hole cut-out and is great for many retrofit applications as it combines dispensing flexibility with space savings.



Spring Configurations ▽



Cup Type	Position	Spring
Foam Cups	: Any Position	: <b>F</b> Spring
Paper Cups	: Horizontal	: <b>F</b> Spring
Plastic Cups	: Horizontal	: <b>F</b> Spring
Paper Cups	: Angled	: <b>P</b> Spring
Plastic Cups	: Angled	: <b>P</b> Spring
Paper Cups	: Vertical	: <b>P</b> Spring
Plastic Cups	: Vertical	: <b>P</b> Spring

Dispensers ship with both the "F" and "P" compression springs.

Single spring models are available; see price list for additional information.

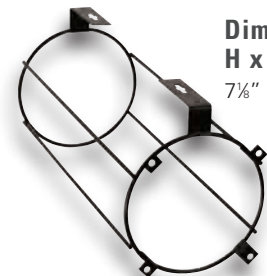
Color Ring Bezels ▽

Optional colored ring bezels are available for SLR-2 Series cup dispensers in this popular color:



- SILVER SATIN (stainless faux finish)

Under Counter Bracket ▽



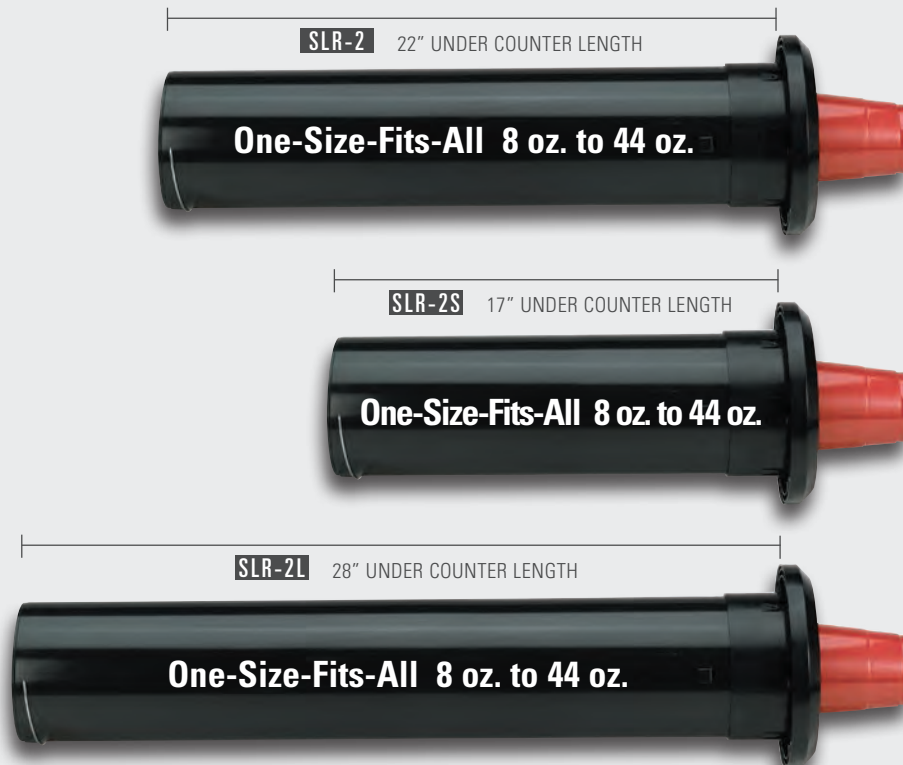
**Dimensions**  
H x W x D  
7½" x 6" x 15¼"

The optional **STL-2-SMB** wire surface mount bracket mounts to any flat surface or wire shelf and allows you to mount a SLR-2 cup dispenser in horizontal, vertical or angled positions. Maximum counter lip is 1/2".

**SLR-2, SLR-2S AND SLR-2L ONE-SIZE-FITS-ALL**  
**IN-COUNTER INTERCHANGEABLE BAFFLE CUP DISPENSERS**

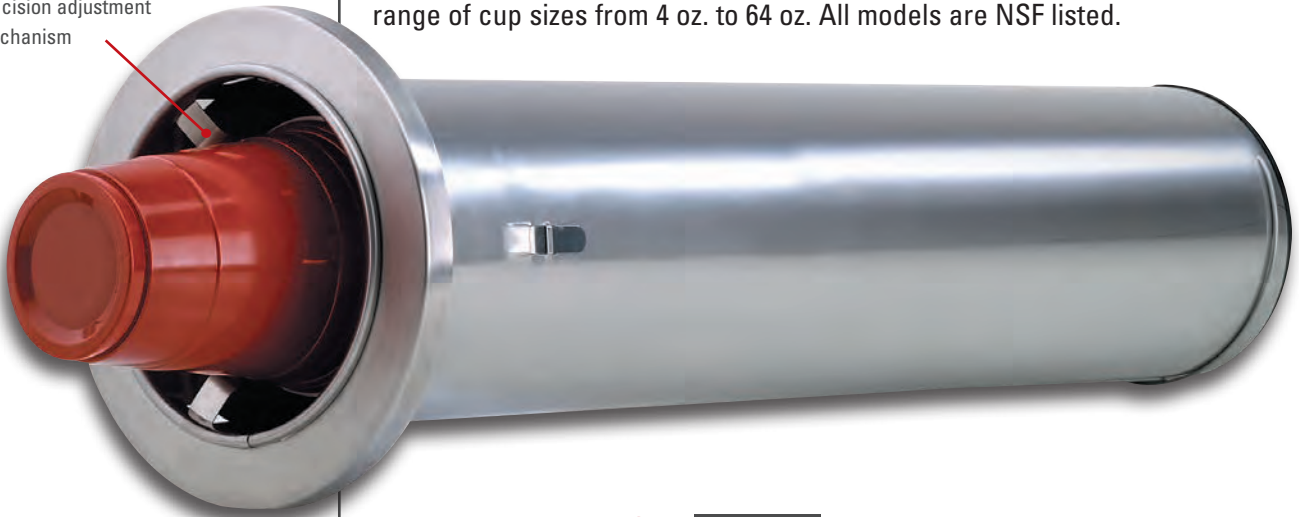
These dispensers accommodate a variety of 8 oz. to 44 oz. paper, plastic or foam cups with rim diameters ranging in size from 3"–4½". The SLR-2 models require a 5¼" hole.

With three under counter lengths to choose from the SLR-2 cup dispenser can be ordered to suit your particular installation requirements.



# PRECISION ADJUSTMENT DISPENSING FLEXIBILITY

**DISPENSE-RITE**  
exclusive spring-clip  
precision adjustment  
mechanism



## ADJ SERIES IN-COUNTER ADJUSTABLE CUP DISPENSERS

**DISPENSE-RITE** ADJ Series cup dispensers feature quality stainless steel construction with a quick release mounting collar. These dispensers utilize an exclusive spring-clip precision adjustment mechanism to accommodate a full range of cup sizes from 4 oz. to 64 oz. All models are NSF listed.

The **ADJ-1** and **ADJ-1.50** are **Slim-Line** models for small cup sizes and tight spaces. The ADJ-1 is designed to accommodate 4 oz. to 12 oz. paper, plastic or foam cups with rim diameters ranging in size from 2½"–3½". The ADJ-1 model requires a small 4" hole cut-out and is ideal for many retrofit applications. The ADJ-1.50 is designed to accommodate 8 oz. to 24 oz. paper, plastic or foam cups with rim diameters ranging in size from 3"–3¾". The ADJ-1.50 model requires a 4½" hole cut-out.

The **ADJ-2** is our most popular cup dispenser. This is a **One-Size-Fits-All** model that offers maximum dispensing flexibility. This unit is designed to accommodate a variety of 8 oz. to 44 oz. paper, plastic or foam cups with rim diameters ranging in size from 3"–4⅝". This model comes in two under counter lengths: 22" or 19". The ADJ-2 models require a 5¼" hole cut-out.

The **ADJ-3** is the ideal dispenser for **Jumbo-Size** drink cups and deli containers. This dispenser is designed to accommodate 44 oz. to 64 oz. paper, plastic or foam cups with rim diameters ranging in size from 4½"–5¼". The ADJ-3 model requires a larger 5¾" hole cut-out.

**NSF**

RING BEZEL DIAMETER



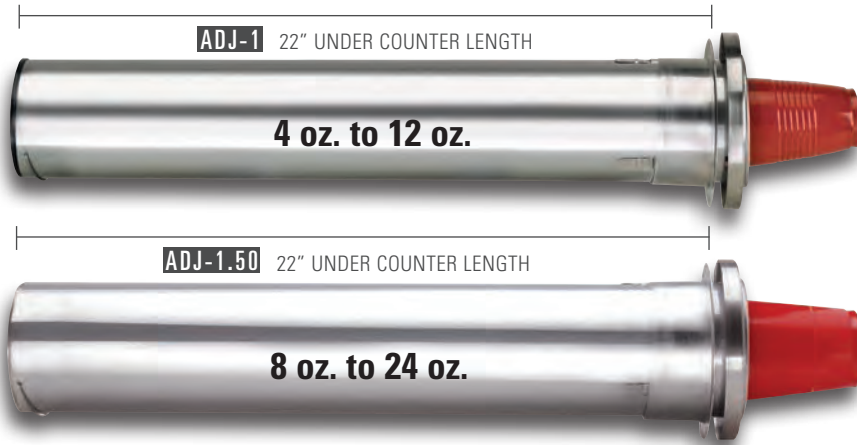
MOUNTING HOLE  
CUT OUT

Model Number	Cup Rim Diameter Range	Under Counter Length	Ring Bezel Diameter	Mounting Hole Cut-Out
ADJ-1	2½"–3½"	22"	5⅝"	4"
ADJ-1.50	3"–3¾"	22"	5⅝"	4½"
ADJ-2	3"–4⅝"	22"	6⅞"	5¼"
ADJ-2S	3"–4⅝"	19"	6⅞"	5¼"
ADJ-3	4½"–5¼"	22"	7⅞"	5¾"

STAINLESS STEEL CONSTRUCTION

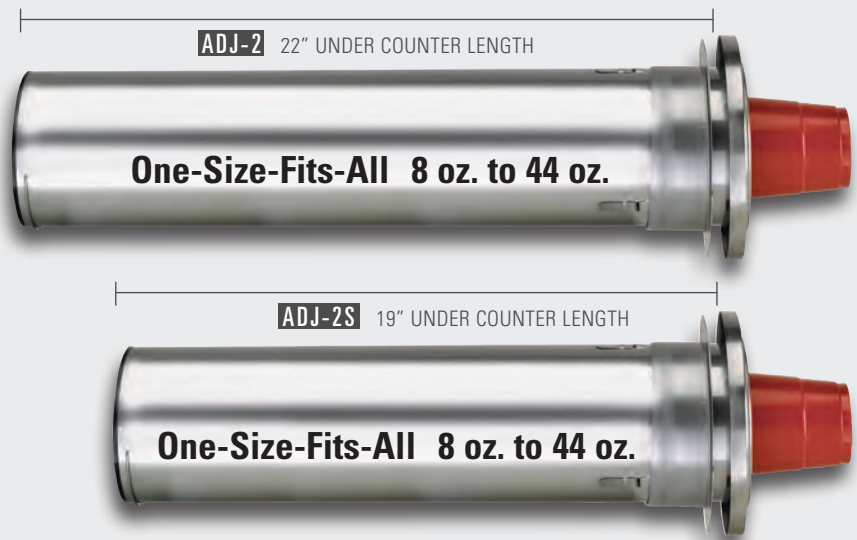
**ADJ-1 AND ADJ-1.50 SLIM-LINE CUP DISPENSERS**

The ADJ-1 is designed to accommodate 4 oz. to 12 oz. paper, plastic or foam cups with rim diameters ranging in size from 2½"–3½". The ADJ-1.50 is designed to accommodate 8 oz. to 24 oz. paper, plastic or foam cups with rim diameters ranging in size from 3"–3½".



**ADJ-2 AND ADJ-2S ONE-SIZE-FITS-ALL CUP DISPENSERS**

These dispensers are designed to accommodate a variety of 8 oz. to 44 oz. paper, plastic or foam cups with rim diameters ranging in size from 3"–4½".

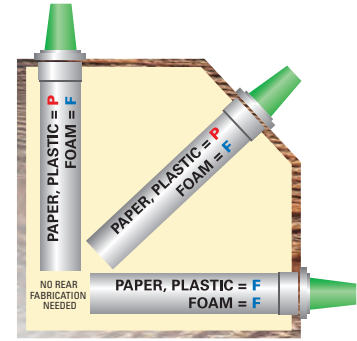


**ADJ-3 JUMBO-SIZE CUP DISPENSERS**

This dispenser is designed to accommodate 44 oz. to 64 oz. paper, plastic or foam cups with rim diameters ranging in size from 4½"–5¼".



Spring Configurations ▽



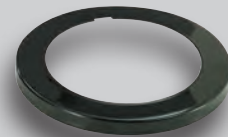
Cup Type	Position	Spring
Foam Cups	: Any Position	: <b>F</b> Spring
Paper Cups	: Horizontal	: <b>F</b> Spring
Plastic Cups	: Horizontal	: <b>F</b> Spring
Paper Cups	: Angled	: <b>P</b> Spring
Plastic Cups	: Angled	: <b>P</b> Spring
Paper Cups	: Vertical	: <b>P</b> Spring
Plastic Cups	: Vertical	: <b>P</b> Spring

Dispensers ship with both the "F" and "P" compression springs.

Single spring models are available; see price list for additional information.

Color Ring Bezels ▽

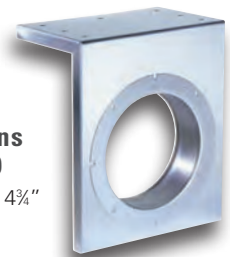
Stainless ring bezels are standard on all models. Optional gloss black powder coated ring bezels are available for ADJ-2 Series cup dispensers.



- **BUMPER BLACK** (high gloss)

Available only for the ADJ-2 and ADJ-2S models

Under Counter Bracket ▽



**Dimensions**  
H x W x D

9½" x 7¾" x 4¾"

The optional **UCMB-2** stainless steel under counter bracket mounts to any flat surface or wire shelf creating a face plate to mount an ADJ-2 cup dispenser. Maximum counter lip is 1½".

STAINLESS STEEL CONSTRUCTION



# SELF-ADJUSTING DISPENSING FLEXIBILITY

## **BFL SERIES** IN-COUNTER INTERCHANGEABLE BAFFLE CUP DISPENSERS

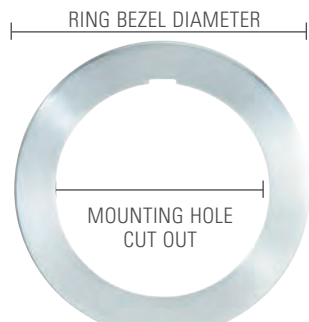
**DISPENSE-RITE** BFL Series cup dispensers feature quality stainless steel construction. These dispensers utilize an interchangeable silicone baffle gasket system to accommodate a full range of cup sizes from 8 oz. to 64 oz.

A calibrated compression spring ensures one at a time dispensing in horizontal, angled or vertical mounting positions. The quick-release mounting bracket fully supports the dispenser in horizontal, angled or vertical mounting positions and no additional support is necessary. All models are NSF listed.

**DISPENSE-RITE**  
interchangeable baffle  
gasket system



**STAINLESS STEEL CONSTRUCTION**



The **BFL-2** is a **One-Size-Fits-All** model that offers maximum dispensing flexibility. This unit is designed to accommodate a variety of 8 oz. to 44 oz. paper, plastic or foam cups with rim diameters ranging in size from 3"–4½". This model comes in two under counter lengths: 22" or 19". The BFL-2 models require a 5¼" hole cut-out.

The **BFL-3** is the ideal dispenser for **Jumbo-Size** drink cups and deli containers. This unit is designed to accommodate a variety of 44 oz. to 64 oz. paper, plastic or foam cups with rim diameters ranging in size from 4½"–5¼". The BFL-3 model requires a larger 5¾" hole cut-out.

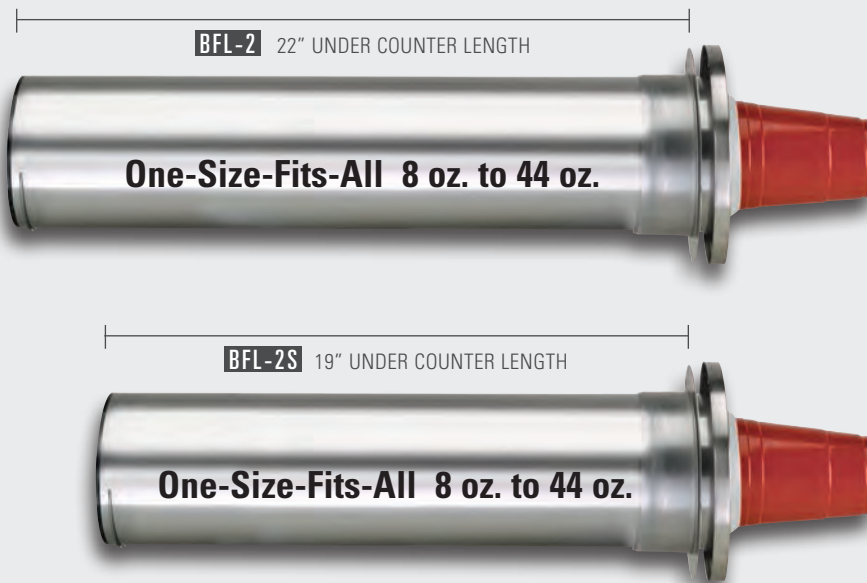
Model Number	Cup Rim Diameter Range	Under Counter Length	Ring Bezel Diameter	Mounting Hole Cut-Out
BFL-2	3"–4½"	22"	6⅞"	5¼"
BFL-2S	3"–4½"	19"	6⅞"	5¼"
BFL-3	4½"–5¼"	22"	7⅞"	5¾"

▽ **IN-COUNTER INTERCHANGEABLE BAFFLE CUP DISPENSERS**

**BFL-2, BFL-2S ONE-SIZE-FITS-ALL**  
**IN-COUNTER INTERCHANGEABLE BAFFLE CUP DISPENSERS**

These dispensers are designed to accommodate a variety of 8 oz. to 44 oz. paper, plastic or foam cups with rim diameters ranging in size from 3"–4½".

With two under counter lengths to choose from the BFL-2 cup dispenser can be ordered to suit your particular installation requirements.



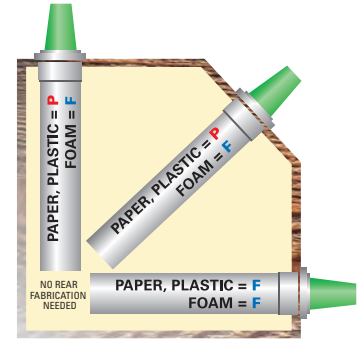
**BFL-3 JUMBO-SIZE**  
**IN-COUNTER INTERCHANGEABLE BAFFLE CUP DISPENSERS**

This dispenser is designed to accommodate 44 oz. to 64 oz. paper, plastic or foam cups with rim diameters ranging in size from 4½"–5¼".



- Above models include multiple silicone baffles and are for use with the cup rim diameter range listed. Ounce capacities are provided for reference only. Always verify cup rim diameter prior to ordering.
- Above models ship with 2 different compression springs "F" & "P". See spring configuration chart in upper right for more details.

Spring Configurations ▾



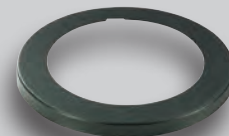
Cup Type	Position	Spring
Foam Cups	: Any Position	: <b>F</b> Spring
Paper Cups	: Horizontal	: <b>F</b> Spring
Plastic Cups	: Horizontal	: <b>F</b> Spring
Paper Cups	: Angled	: <b>P</b> Spring
Plastic Cups	: Angled	: <b>P</b> Spring
Paper Cups	: Vertical	: <b>P</b> Spring
Plastic Cups	: Vertical	: <b>P</b> Spring

Dispensers ship with both the "F" and "P" compression springs.

Single spring models are available; see price list for additional information.

Color Ring Bezels ▾

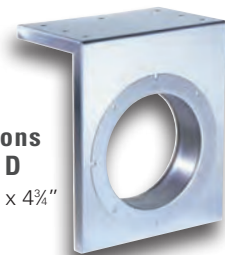
Stainless ring bezels are standard on all models. Optional gloss black powder coated ring bezels are available for BFL-2 Series cup dispensers.



- **BLACK RIDGE** (matte textured)

Available only for the BFL-2 and BFL-2S models

Under Counter Bracket ▾



**Dimensions**  
**H x W x D**  
9¼" x 7¾" x 4¾"

The optional **UCMB-2** stainless steel under counter bracket mounts to any flat surface or wire shelf creating a face plate to mount a BFL-2 cup dispenser. Maximum counter lip is 1¼".

**STAINLESS STEEL CONSTRUCTION**

# LID DISPENSING FLEXIBILITY SIMPLIFIED

## SLR-LID-2 SERIES IN-COUNTER SPRING-LOADED LID DISPENSERS

**DISPENSE-RITE** SLR-LID-2 Series lid dispensers are designed to combine simplicity with dependability for long-term reliability and maximum cost savings.

This sanitary beverage lid dispenser requires no adjustment and is available for a variety of in-counter and countertop applications. Lid stacks are enclosed to protect from potential contamination due to spills, splashes and sneezes. All parts are easily removable for simple cleaning. NSF Listed.

**DISPENSE-RITE**  
lid dispenser design  
requires no adjustment  
and provides easy one  
handed operation



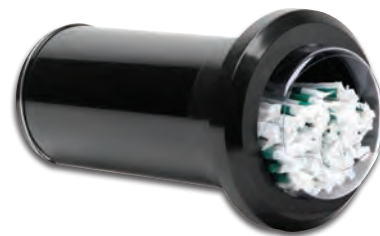
SLR-LID-2

### IMPORTANT INFORMATION ON LID COMPATIBILITY

**DISPENSE-RITE** SLR-LID-2 Series Lid Dispensers are primarily intended for use with flat, cold beverage lids. Lids that are tightly nested or have deep extrusions may not be compatible. To confirm lid compatibility please contact a DISPENSE-RITE representative and provide a full sleeve of lids for testing prior to ordering.

## SLR-STRAW-2 IN-COUNTER STRAW ORGANIZER

The SLR-STRAW-2 in-counter straw organizer holds standard and jumbo length straws. These straw organizers look great with any SLR Series lid or cup dispenser. All parts are easily removable for simple cleaning. NSF Listed.



SLR-STRAW-2



Model Number	Maximum Lid Diameter	Under Counter Length	Ring Bezel Diameter	Mounting Hole Cut-Out
SLR-LID-2	4 5/8"	22"	7 1/8"	5 1/4"
SLR-LID-2S	4 5/8"	17"	7 1/8"	5 1/4"
SLR-STRAW-2	-	12"	7 1/8"	5 1/4"

ABS PLASTIC CONSTRUCTION

# ▽ UNDER COUNTER CUP DISPENSER MOUNTING BRACKETS

BLACK POLYSTYRENE CONSTRUCTION



UCMB-1BT



UCMB-2BT



UCMB-3BT



UCMB-2BT under counter mounting bracket shown above with two SLR-2 Series in-counter cup dispensers (not included) installed. UCMB Series brackets allows for installation to any flat surface.

## ▽ UCMB Bracket Cup Dispenser Compatibility



STL-2

SLR-2

BFL-2

ADJ-2

All **DISPENSE-RITE** one-size-fits-all cup dispenser models are compatible with UCMB Series under counter mounting brackets. This includes any STL-2, SLR-2, BFL-2 and/or ADJ-2 Series in-counter cup dispenser.

GREAT FOR MOUNTING IN-COUNTER CUP DISPENSERS UNDER THE COUNTER

### UCMB SERIES UNDER COUNTER CUP DISPENSER MOUNTING BRACKETS

Under counter mounting brackets feature durable polystyrene construction. These unique brackets will allow you to mount one or more one-size-fits-all in-counter cup dispensers to any flat surface.

Brackets are available to mount one, two or three STL-2, SLR-2, BFL-2 and/or ADJ-2 Series cup dispensers.

The maximum acceptable counter lip is 1-5/8"H.

Model Number	Item Description	Dimensions H x W x D
UCMB-1BT	1 Hole Under Counter Bracket	9½" x 8" x 5"
UCMB-2BT	2 Hole Under Counter Bracket	9½" x 15½" x 5"
UCMB-3BT	3 Hole Under Counter Bracket	9½" x 23½" x 5"



**DISPENSE-RITE®**

**Export Representatives:**

**MBH International Sales Inc.**  
4907 SW 75th Ave.  
Miami, FL 33155 , USA  
Phone: (212) 594-6700 ; (305) 669-1894  
Fax: (212) 594-7100  
e-mail : [sales@mbhny.com](mailto:sales@mbhny.com)  
[www.mbhny.com](http://www.mbhny.com)

**DISPENSE-RITE** is pleased to offer the world's largest selection of dispensing products. We offer a complete selection of products for cups, lids, straws, condiments, napkins, coffee sleeves, flatware, bottles and ice cream cones.



**PROUDLY MADE IN USA**

