



TRANSFORM THE WAY YOU STORE, ORGANIZE, & TRANSPORT



STORE GRID WALL ORGANIZATION SYSTEMS

PIZZA DOUGH BOXES



PREMIUM POLYMER SHELVING WITH NEW CAN RACKS



MILLENNIA POLYMER SHELVING

WHY QUANTUM FOOD SERVICE?

- RELIABLE IN-STOCK INVENTORY
- SUPER FAST-SAME DAY SHIPMENTS
- LAYOUT & DESIGN SERVICES INCLUDED
- LARGEST SELECTION OF WIRE & BINS

NEW 2023 PRODUCTS

Take advantage of our Design and Installation capability



QUANTUM CLASSICS
Chrome Wire Shelving

Good



CHROME WIRE SHELVING

- 1 year limited warranty
- Up to 800 lb. load capacity per shelf
- Wire allows air to circulate and light to penetrate for increased product visibility and minimal dust buildup
- NSF Approved
- Brilliant finish

WIDTHS (W): 12", 14", 18", 21", 24", 30", 36"
LENGTHS (L): 24", 30", 36", 42", 48", 54", 60", 66", 72"
HEIGHTS (H): 6", 14", 34", 36", 39", 54", 63", 74", 86", 96"

QUANTUM CLASSICS
Stainless Wire Shelving

VERY Good



STAINLESS STEEL WIRE SHELVING

- Lifetime limited warranty
- Up to 800 lb. load capacity per shelf
- Smooth, vented, open grid surface allows for air circulation and minimal dust buildup
- NSF Approved
- Anti-microbial
- Resistant against corrosion

WIDTHS (W): 12", 14", 18", 21", 24", 30", 36"
LENGTHS (L): 24", 30", 36", 42", 48", 54", 60", 72"
HEIGHTS (H): 6", 14", 34", 42", 54", 63", 74", 86", 96"

QUANTUM CLASSICS
Solid Shelving

SUPER Good



SOLID SHELVING SYSTEM

- 1 year limited warranty on Galvanized, Lifetime limited warranty on Stainless
- Up to 600 lb. load capacity per shelf
- NSF Approved
- Stainless Steel finish is anti-microbial and 100% rust proof

WIDTHS (W): 14", 18", 21", 24"
LENGTHS (L): 24", 30", 36", 42", 48", 54", 60", 72"
HEIGHTS (H): 6", 14", 34", 38", 39", 42", 54", 63", 74", 86", 96"



QUANTUM CLASSICS PLUS Epoxy Wire Shelving

Great



CORROSION RESISTANT EPOXY COATED WIRE SHELVING

- 15 year limited warranty
- Up to 800 lb. load capacity per shelf
- Wire allows air to circulate and light to penetrate for increased product visibility and minimal dust buildup
- NSF Approved
- Anti-microbial
- Resistant against corrosion

WIDTHS (W): 12", 14", 18", 21", 24", 30", 36"
 LENGTHS (L): 24", 30", 36", 42", 48", 54", 60", 66", 72"
 HEIGHTS (H): 6", 14", 34", 39", 54", 63", 74", 86", 96"

QUANTUM PREMIUM Polymer Wire Shelving

Better



HYBRID POLYMER AND WIRE SHELVING

- 15 year limited warranty on Epoxy, Lifetime limited warranty on Polymer
- Up to 800 lb. load capacity per shelf
- Smooth, vented, open grid surface allows for air circulation and minimal dust buildup
- Easily removable and dishwasher safe shelf plates
- NSF Approved
- Anti-microbial
- Resistant against corrosion

WIDTHS (W): 14", 18", 21", 24"
 LENGTHS (L): 30", 36", 42", 48", 54", 60", 72"
 HEIGHTS (H): 6", 14", 34", 54", 63", 74", 86", 96"

MILLENNIA Polymer Shelving

Best



ALL POLYMER SHELVING SYSTEM

- Lifetime limited warranty
- Up to 1000 lb. load capacity per shelf
- Smooth or vented, open grid surface allows for air circulation and minimal dust buildup
- Easily removable and dishwasher safe shelf plates
- NSF Approved
- Anti-microbial
- 100% rust proof
- All Polymer

WIDTHS (W): 18", 21", 24"
 LENGTHS (L): 24", 30", 36", 42", 48", 54", 60", 72"
 HEIGHTS (H): 14", 26", 38", 50", 62", 74", 86", 98"





MILLENNIA 1 BOX VENTED SHELF UNITS AND PLATFORMS

Millenia 1 Box Vented Shelf Units



Vented shelves allows for storage from small to large items. Open grid surface allows for air circulation and minimal dust buildup. All vented complete shelf units consist of 4 shelves and 4 posts. Mobilize starter kit shelving unit using optional mobile kit. **Color:** Gray

MODEL NO.	DIMENSIONS W" x L" x H"	SHIP WGT
Millenia One Box Shelving		
QP182474VS-4	18" x 24" x 74"	35 lbs
QP183074VS-4	18" x 30" x 74"	39 lbs
QP183674VS-4	18" x 36" x 74"	43 lbs
QP184274VS-4	18" x 42" x 74"	46 lbs
QP184874VS-4	18" x 48" x 74"	50 lbs
QP212474VS-4	21" x 24" x 74"	36 lbs
QP213074VS-4	21" x 30" x 74"	41 lbs
QP213674VS-4	21" x 36" x 74"	45 lbs
QP214274VS-4	21" x 42" x 74"	49 lbs
QP214874VS-4	21" x 48" x 74"	54 lbs
QP242474VS-4	24" x 24" x 74"	43 lbs
QP243074VS-4	24" x 30" x 74"	48 lbs
QP243674VS-4	24" x 36" x 74"	54 lbs
QP244274VS-4	24" x 42" x 74"	59 lbs
QP244874VS-4	24" x 48" x 74"	65 lbs



OPTIONAL MOBILE KIT QPPSC-5S

Includes four 5"x1-1/4" Polymer swivel casters, 2 with brake and four donut bumpers

SUPER LOW PRICE

SUPER LOW TRANSIT COST

SINGLE BOX SHIPMENT

INSIDE EACH SINGLE BOX UNIT

- 4 - vented shelves
- 4 - posts (6 pieces each)
- 4 - floor adapters
- 4 - post caps
- 4 - pack (4 sets of split sleeves each)
- 4 - pack (4 gussets each)



NEW

4 SHELF UNIT

Millenia Polymer Material

PERFORMANCE FEATURES:

- Lifetime limited warranty against rust and corrosion
- Up to 1,000 lb. load capacity per shelf
- Extremely versatile and suitable for wet, humid and dry environments
- Polymer composition makes it resistant to abrasive chemicals and salt water with built-in anti-microbial protection
- Shelves can be adjusted on 1" increments with no special tool required
- NSF Approved

Millenia Platforms



All platform units consist of 1 shelf. **Color:** Gray

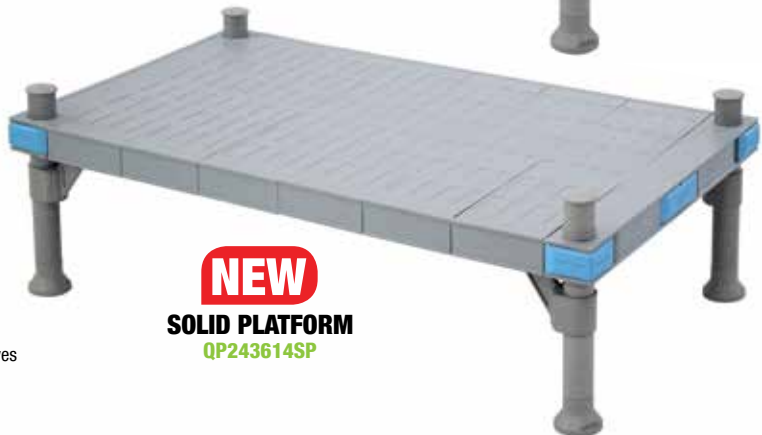
MODEL NO.	NOMINAL DIMENSIONS W" x L" x H"	SHIP WGT
Millenia Vented Platforms		
QP183614VP	18" x 36" x 14"	12 lbs
QP184814VP	18" x 48" x 14"	14 lbs
QP186014VP	18" x 60" x 14"	16 lbs
QP243614VP	24" x 36" x 14"	15 lbs
QP244814VP	24" x 48" x 14"	17 lbs
QP246014VP	24" x 60" x 14"	20 lbs
Millenia Solid Platforms		
QP183614SP	18" x 36" x 14"	13 lbs
QP184814SP	18" x 48" x 14"	15 lbs
QP186014SP	18" x 60" x 14"	17 lbs
QP243614SP	24" x 36" x 14"	16 lbs
QP244814SP	24" x 48" x 14"	19 lbs
QP246014SP	24" x 60" x 14"	22 lbs



NEW

VENTED PLATFORM

QP243614VP



NEW

SOLID PLATFORM

QP243614SP



NEW

GUSSETS

QP6

Included with all shelves for extra support (Sold as 4-pack)



Millenia Drying



BUILT FOR EFFICIENT AND CONVENIENT DRYING

NEW

Allow items to be spread out reducing the risk of mold and bacteria growth. All drying rack complete units consist of 4 shelves. **Color:** Gray

MODEL NO.	NOMINAL DIMENSIONS W" x L" x H"	SHIP WGT
Millenia Universal Drying Racks		
QPM243068DR	24" x 30" x 68"	58 lbs
QPM244268DR	24" x 42" x 68"	67 lbs
QPM245468DR	24" x 54" x 68"	78 lbs
Millenia Pronged Drying Rack		
QPM243068PDR1	24" x 30" x 68"	54 lbs
QPM244268PDR1	24" x 42" x 68"	62 lbs
QPM245468PDR1	24" x 54" x 68"	70 lbs
QPM243068PDR2	24" x 30" x 68"	62 lbs
QPM244268PDR2	24" x 42" x 68"	74 lbs
QPM245468PDR2	24" x 54" x 68"	86 lbs
Millenia Waved Drying Rack		
QPM243068WDR	24" x 30" x 68"	62 lbs
QPM244268WDR	24" x 42" x 68"	74 lbs
QPM245468WDR	24" x 54" x 68"	86 lbs



PRONGED DRYING RACK COMPLETE UNIT
QPM244268PDR2



UNIVERSAL DRYING RACK COMPLETE UNIT
QPM244268DR



WAVED DRYING RACK COMPLETE UNIT
QPM244268WDR

SANITATION WITH DURABILITY



SHELF FRAMES
QP2430F
QP2442F
QP2454F

Shelf frames are needed in order to use additional drying cradles.

DRYING CRADLES



PRONGED DRYING CRADLE
QPDR1

Easily attaches to shelf frames. Perfect for dishes, drying cups, glassware, or trays. 1-1/2" spacing between each 2-3/4"H prong.



PRONGED DRYING CRADLE
QPDR2

Easily attaches to shelf frames. Perfect for dishes, drying cups, glassware, or trays. 2-1/2" spacing between each 2-3/4"H prong.



WAVED DRYING AND STORAGE CRADLE
QPWDR

Easily attaches to shelf frames. Perfect for drying dishes, and flat boards.



Pizza Dough Boxes



NEW

Quantum's Pizza Dough Boxes are built to perfect the proofing process. Made from heavy-duty polypropylene, these boxes are lightweight, durable, and break resistant.

IDEAL FOR STORING, PROOFING, TRANSPORTING AND COOLING PIZZA DOUGH



FSB-PT26183
Shown with LID **FSB-PL2618**



FSB-DT18133
17-3/4"L X 12-3/4"W X 3-3/8"H
"ARTISAN DOUGH TRAY"



FSB-PT26183
25-5/8"L X 18"W X 3-3/8"H



FSB-PT26186
25-5/8"L X 18"W X 6-3/8"H



FSB-DL1813
17-3/4"L X 12-3/4"W X 3/4"H
"ARTISAN LID"



FSB-PL2618
25-5/8"L X 18"W X 1-3/4"H



FSB-PTDLY
25-5/8"L X 18"W X 7"H
Includes four 5" x 1-1/4" poly casters, two rigid, two swivel, one with brake. Available in Black.

Precision engineering and design ensures a space-efficient and secure stacked configuration to reduce the need for extra lids, while keeping ideal moisture and temperature for the yeast to grow. The boxes withstand temperatures ranging from -40°F to 160°F. **Colors:** White and Gray. Custom colors are also available, please call for details.

2 COLORS AVAILABLE

ADD SUFFIX TO END OF EACH MODEL NO. WHEN SELECTING COLOR

• WHITE WT • GRAY GY

- Sold in carton of 6
- Dolly sold as each
- Bulk, no carton packaging available at discount prices, call for details



Up to 800 lb.
MOBILE LOAD CAPACITY

PIZZA TRAY STACKING SYSTEM



Bussing Tubs and Utility Boxes



Quantum's heavy-duty bussing tubs and utility boxes are built to last! Available in Polypropylene polymer, these containers are engineered for rigorous and continuous usage. ABS and custom colors are also available, please call for details. All tubs are super easy to clean and dishwasher safe. Virgin grade materials afford lifetime protection against bacteria, mold, mildew, and product degradation. Anti-microbial material additives available upon request. **Colors:** Gray, Brown, Black or Blue

4 COLORS AVAILABLE



FSB-1544
14-3/16" L X 4-7/16" W X 4-1/8" H



FSB-1295
12-1/16" L X 9-1/16" W X 5-1/8" H



FSB-20155
20" L X 15" W X 5" H



FSB-20155R
20" L X 15" W X 5" H
"AIRPORT STYLE"
Also available in Blue(BL). Optional lids available.



FSB-20113
20-7/16" L X 11-3/8" W X 3-3/4" H



FSB-21165
20" L X 15" W X 5" H



FSB-21155
21" L X 15" W X 5" H



FSB-21155R
21" L X 15" W X 5" H



FSB-21157
21" L X 15" W X 7" H



FSB-21157R
21" L X 15" W X 7" H



FSB-22175
22" L X 17" W X 5" H



FSB-22177R
21-1/2" L X 17" W X 7" H
"AIRPORT STYLE"
Also available in Blue(BL)

All-purpose tubs provide a storage, cleaning, and transportation solution for multiple applications. Built in handles are ergonomically designed for comfortable and easy-grip and handling. All tubs nest when empty saving valuable workspace.

ADD SUFFIX TO END OF EACH MODEL NO. WHEN SELECTING COLOR
♦ GRAY GY ♦ BROWN BN ♦ BLACK BK ♦ BLUE BL* **Ex. FSB-20155BK**

*Blue color available only for Model No. FSB-20155R, FSB-22177R and FSB-L2216



FSB-L2216
22" L X 16-1/2" W X 3/4" H
Lid for **FSB-20155R**
Also available in Blue(BL)

- Sold in carton of 12
- Bulk, no carton packaging available at discount prices, call for details



TUBS NEST WHEN EMPTY

SUPER EASY TO CLEAN



NOW 3 FINISHES AVAILABLE ► EXPANDED 1 BOX WIRE SHELVING OFFERING NOW also available in **BLACK** and **GREEN Epoxy**



CONVENIENT 1 BOX WIRE SHELVING UNIT
Chrome Finish



NEW FINISH
CONVENIENT 1 BOX WIRE SHELVING UNIT
Black Epoxy Finish



NEW FINISH
CONVENIENT 1 BOX WIRE SHELVING UNIT
Green Epoxy Finish

Convenient 1 Box Wire Shelving Units

Super competitive cost. All packed in 1 box for super easy inventory control, shipping, and receiving. Four shelf configuration.

FINISHES:

◆ CHROME ◆ GREEN EPOXY P ◆ BLACK EPOXY BK

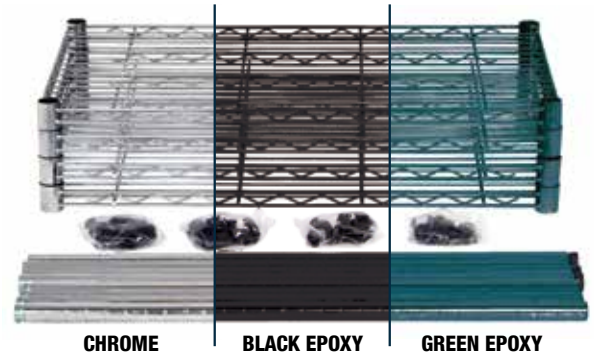
Add SUFFIX to Model No. to order Epoxy Finish ► Ex. **RWR72-1830LD^P**
RWR72-1830LD^{BK}

MODEL NO.	DIMENSIONS W" x L" x H"	SHIP WGT
Chrome One Box Shelving		
RWR72-1830LD	18" x 30" x 72"	35 lbs
RWR72-1836LD	18" x 36" x 72"	38 lbs
RWR72-1842LD	18" x 42" x 72"	42 lbs
RWR72-1848LD	18" x 48" x 72"	46 lbs
RWR72-2430LD	24" x 30" x 72"	40 lbs
RWR72-2436LD	24" x 36" x 72"	46 lbs
RWR72-2442LD	24" x 42" x 72"	51 lbs
RWR72-2448LD	24" x 48" x 72"	56 lbs



INSIDE EACH SINGLE BOX UNIT

- 4 - posts
- 4 - wire shelves



PERFORMANCE FEATURES:



- Assembles in minutes
- Wire design allows for air circulation and minimal dust buildup
- Shelves easily adjust on 1" centers to your exact needs
- Ideal storage solution for any commercial, office, warehouse or home application
- Includes posts, shelves, and all needed hardware - all in one box
- No tools required

SUPER LOW PRICE!

► **SINGLE BOX SHIPMENT**

► **SUPER LOW TRANSIT COST**



MOBILIZE YOUR SHELVING

W-PLI - Post Insert
Each unit will require one 4-pack.
WR-3 (Mobile Kit)
Set of four 3" polyurethane casters, all with brakes. Can be used with all units shown. Up to 800 lb. load capacity.





S-Hooks

For continuous runs of shelving. Two hooks should be used per shelf where two posts are not utilized. Sold as an 8 pack. For use with green polymer shelving. **Finish:** Proform Green Epoxy/Stainless Steel



NEW

S-HOOKWPM
Proform Green Epoxy/
Stainless Steel



ALSO AVAILABLE

Polymer 1 Box Wire Units

Finish: Proform Green Epoxy

MODEL NO.	DIMENSIONS W" x L" x H"	SHIP WGT
Proform Green Epoxy One Box Shelving		
WR74-1830WPM	18" x 30" x 74"	48 lbs
WR74-1836WPM	18" x 36" x 74"	56 lbs
WR74-1842WPM	18" x 42" x 74"	64 lbs
WR74-1848WPM	18" x 48" x 74"	68 lbs
WR74-2130WPM	21" x 30" x 74"	56 lbs
WR74-2136WPM	21" x 36" x 74"	64 lbs
WR74-2142WPM	21" x 42" x 74"	68 lbs
WR74-2148WPM	21" x 48" x 74"	76 lbs
WR74-2430WPM	24" x 30" x 74"	64 lbs
WR74-2436WPM	24" x 36" x 74"	68 lbs
WR74-2442WPM	24" x 42" x 74"	72 lbs
WR74-2448WPM	24" x 48" x 74"	80 lbs



Tray/Pan Drying Racks



Drying rack allow you to store and dry cutting boards, trays and pans. Rack fits on 24" deep shelves fitting from 43 trays to 17 pans per rack. All units have (2) cutting board/tray and (2) pan drying racks. **Finish:** Gray Epoxy

MODEL NO.	DIMENSIONS W" x L" x H"	SHIP WGT
Cutting Board/Tray Drying Racks		
TDR24361GY	24" x 36" x 8"	15 lbs
TDR24481GY	24" x 48" x 8"	21 lbs
TDR24601GY	24" x 60" x 8"	26 lbs
Pan Drying Racks		
TDR24363GY	24" x 36" x 8"	11 lbs
TDR24483GY	24" x 48" x 8"	15 lbs
TDR24603GY	24" x 60" x 8"	18 lbs
Complete Drying Rack Units		
M2436W46DR	24" x 36" x 74"	134 lbs
M2448W46DR	24" x 48" x 74"	162 lbs
M2460W46DR	24" x 60" x 74"	194 lbs



NEW TDR24361GY
Gray Epoxy Finish



NEW TDR24363GY
Gray Epoxy Finish



FITS FROM 24-43 TRAYS PER RACK

FITS FROM 10-17 PANS PER RACK

NEW M2448W46DR
Green Polymer and
Gray Epoxy Finish

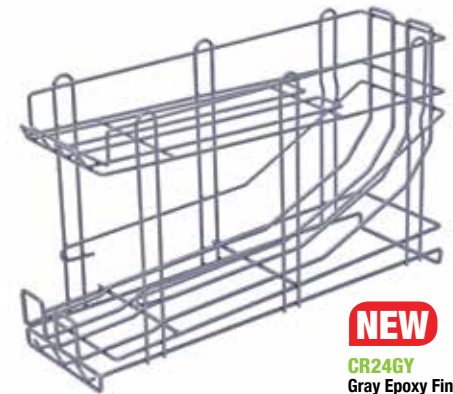
Can Racks



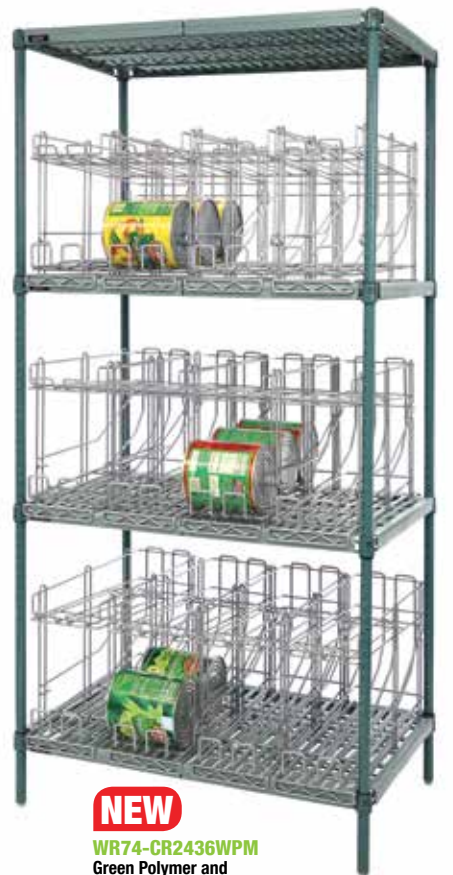
Can rack is front-loading, front-dispensing. Each rack fits on 24" deep shelves and can fit from 8#10 or 12#5 cans per rack. **Finish:** Gray Epoxy

MODEL NO.	DIMENSIONS W" x L" x H"	SHIP WGT
Can Racks		
CR24GY	25-1/2" x 8" x 15"	9 lbs
Complete Can Rack Units		
WR74-CR2436WPM	24" x 36" x 74"	152 lbs
WR74-CR2448WPM	24" x 48" x 74"	181 lbs

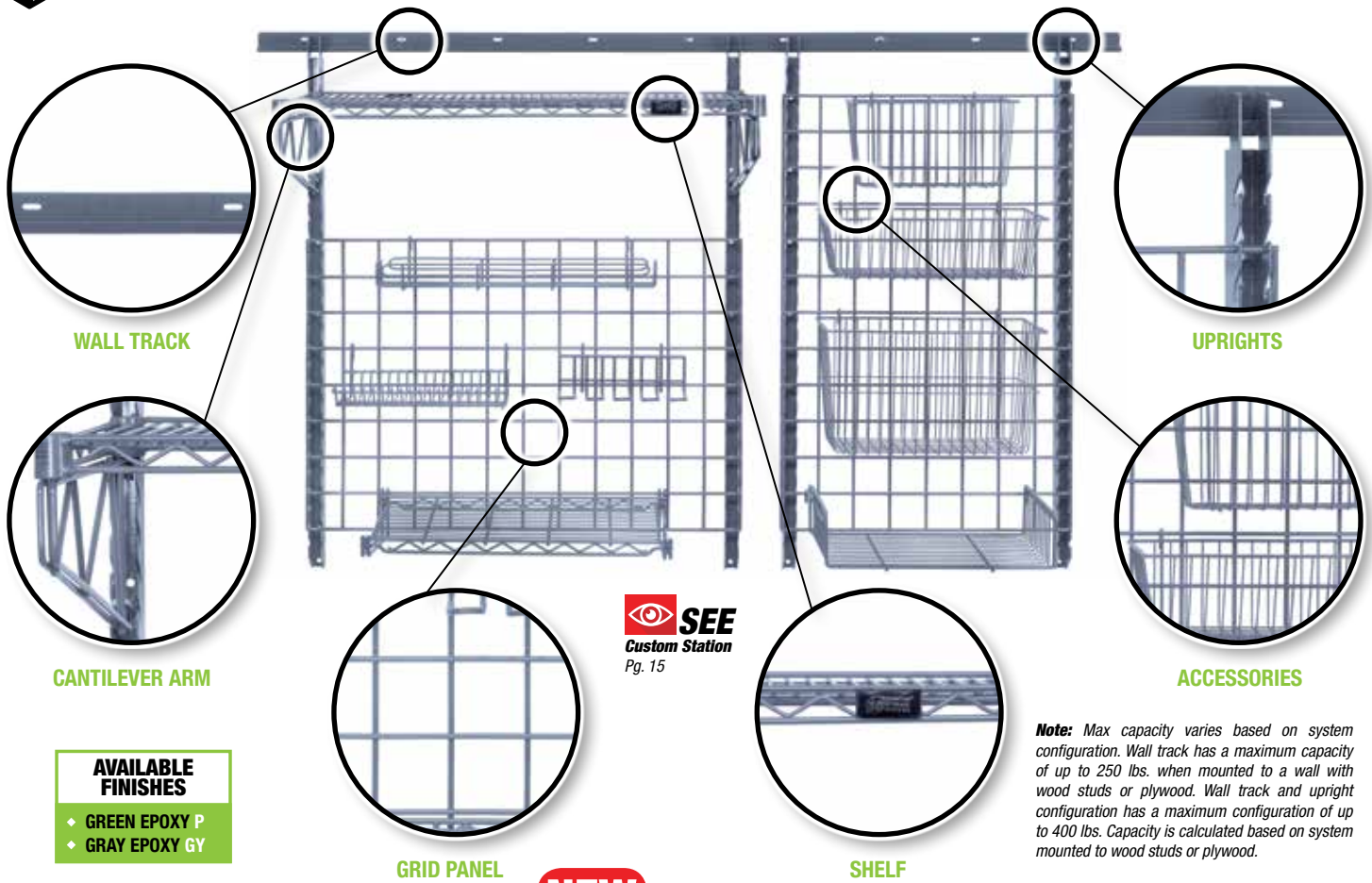
FITS FROM 8-#10 OR 12-#5 CANS PER RACK



NEW CR24GY
Gray Epoxy Finish



NEW WR74-CR2436WPM
Green Polymer and
Gray Epoxy Finish



WALL TRACK

UPRIGHTS

CANTILEVER ARM

ACCESSORIES

GRID PANEL

SHELF

AVAILABLE FINISHES

- ◆ GREEN EPOXY P
- ◆ GRAY EPOXY GY

SEE
Custom Station
Pg. 15

Note: Max capacity varies based on system configuration. Wall track has a maximum capacity of up to 250 lbs. when mounted to a wall with wood studs or plywood. Wall track and upright configuration has a maximum configuration of up to 400 lbs. Capacity is calculated based on system mounted to wood studs or plywood.

Store Grid Mount System



NEW
GRAY EPOXY FINISH

A versatile storage, utility, and display system suited to maximize efficiencies of underutilized spaces and empty walls. Store Grid is an easy to use system that integrates wall tracks, grids, wall shelving, and accessories in custom configurations and lengths. The use of the system around and above sinks, prep-stations, work tables, staging areas and equipment will keep these areas cleaner and more organized. Store Grid enables the flexibility to add wall shelving and wall mounted task stations to any space for ease of accessibility and functionality. The durability of the 15 year warranty anti-microbial epoxy and robust design of the system protects against product degradation and ensures easy installation and maintenance. **Finish:** Proform Green and Gray Epoxy

- **Anti-microbial additive protects the epoxy from bacteria, mold, and mildew that causes stains, odors, and product degradation.**
- **Keep small wares, utilities, inventory, tools, containers, utensils, and supplies off of the work surface and organized for fast, easy access. The work area remains clean and free from clutter to increase efficiencies.**
- **Grids attach to the uprights and enable the customizable configurations of accessories - bulk storage shelves, small supply shelves, baskets, hooks, drying rack accessories, utensil holders, bins, small utility racks, and a variety of holders.**
- **Easy installation and assembly. Mount the wall track and configure a customized work space using uprights, grids, shelves, and accessories.**

FLEXIBLE - WALL TRACKS AND UPRIGHTS ARE DESIGNED TO INTERFACE WITH WOOD STUDS, PLYWOOD, CONCRETE, AND OTHER SUITABLE WALL SURFACES

TO ORDER:

1. Select size of Store Grid wall tracks depending on the space you have
2. Select size and quantity of uprights
3. Select number of shelves and cantilevers (two per shelf)
4. Select grid and accessories

Product Notes

When configuring task stations with uprights, select shelves and grids of the same length. Longer grids may be used, although must not overhang the upright by more than 6" on either side. Grids may be mounted behind shelves. However, shelf support and grid cannot use the same slots on the upright. Maximum usable wall track mounting space is the track length minus 2" (stop fasteners are installed at each end of a run of wall track and occupy around 1" of track space on each end)

Shelves, shelf brackets, grids, and accessories may be removed for in-depth cleaning of walls. Wall tracks and uprights can be wiped clean. **Note:** Do not use abrasive materials since these may damage the protective coating. Clean with mild detergents and damp cloths.

Recommendations

Wash Stations: use shelves, baskets, drying racks and hooks for proper air drying of items used in food preparation.

Prep Stations: use shelves, baskets, bins, hooks, spice rack, and glove box holder for a neater work space.



Store Grid Kits

SGK-403036-2P

Standard-Duty Task Station

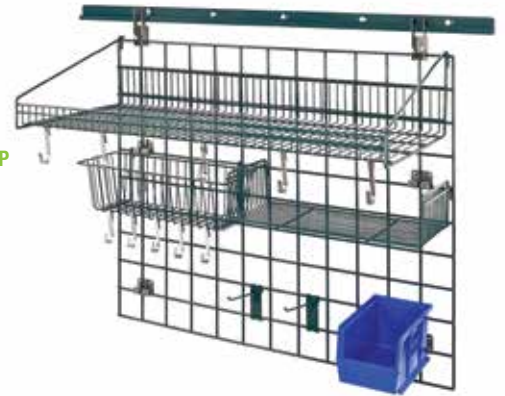
- Wall storage space with an 18" x 36" grid shelf
- 30" x 36" grid space
- 40" track
- Anti-microbial additive protects the epoxy coating from bacteria, mold, and mildew.

Metal finish: Proform Green Epoxy

Bin available in: ■ Blue ■ Green ■ Ivory
■ Red ■ Yellow ■ Black ■ Clear

Unit consists of:

- 1 - Wall Track - **SG-WT40P**
- 1 - Wire Grid - **SG-3036P**
- 1 - Shelf 18" x 36" - **SG-LS1836P**
- 1 - Basket 17-3/8" x 7-1/2" x 5" - **SG-B1775P**
- 2 - Hook - **SG-HOOK6P**
- 10 - Hook - **SG-HOOKSM**
- 1 - Shelf 9" x 18" - **SG-S918P**
- 1 - Bin - **QUS230**
- 1 - Bin Holder - **SG-SBH**
- 1 - Mounting Bracket - **SG-WTBP**



SGK-403036-3GY

Medium-Duty Task Station

- Wall storage space with an 18" x 36" grid shelf, ideal for Wash Stations
- 30" x 36" grid space
- 40" track
- Anti-microbial additive protects the epoxy coating from bacteria, mold, and mildew.

Metal finish: Gray Epoxy

Unit consists of:

- 1 - Wall Track - **SG-WT40GY**
- 2 - Upright - **SG-U31GY**
- 1 - Wire Grid - **SG-3036GY**
- 1 - Shelf 18" x 36" - **SG-LS1836GY**
- 1 - Shelf 9" x 18" - **SG-S918GY**
- 1 - Basket 13-3/8" x 5" x 7" - **SG-B1357GY**
- 1 - Basket 17-3/8" x 7-1/2" x 5" - **SG-B1775GY**
- 1 - Basket 17-3/8" x 7-1/2" x 10" - **SG-B17710GY**
- 1 - Flatware Cylinder - **SG-CH**
- 1 - Cylinder Holder - **SG-CMBGY**
- 2 - Hook - **SG-HOOK6GY**



SGK-562448-1P

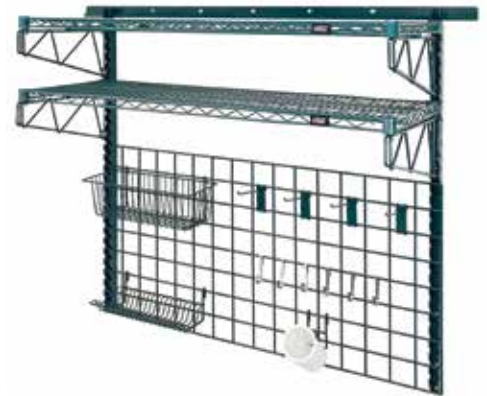
Medium-Duty Task Station

- Wall storage space with 1848P wire shelves, ideal for Wash Stations
- 24" x 48" grid space
- 56" track
- Anti-microbial additive protects the epoxy coating from bacteria, mold, and mildew.

Metal finish: Proform Green Epoxy

Unit consists of:

- 1 - Wall Track - **SG-WT56P**
- 2 - Upright - **SG-U44P**
- 4 - Single Cantilever Arm - **SG-CS18P**
- 2 - Shelf 18" x 48" - **1848P**
- 1 - Wire Grid - **SG-2448P**
- 1 - Basket 17-3/8" x 7-1/2" x 5" - **SG-B1775P**
- 1 - Drying Rack - **SG-LH1384P**
- 1 - Flatware Cylinder - **SG-CH**
- 1 - Cylinder Holder - **SG-CMBP**
- 4 - Hook - **SG-HOOK6P**
- 6 - Hook - **SG-HOOKSM**



SGK-563048-1GY

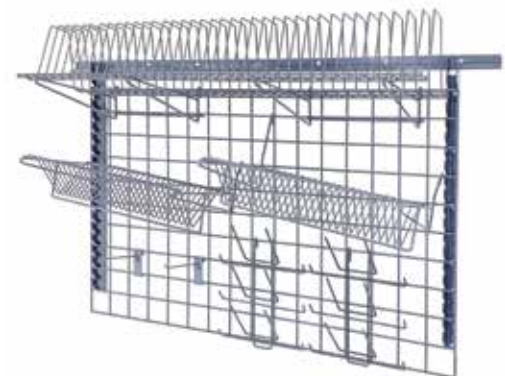
Medium-Duty Task Station

- Wall storage space ideal for Wash Stations
- 30" x 48" grid space
- 56" track
- Anti-microbial additive protects the epoxy coating from bacteria, mold, and mildew.

Metal finish: Gray Epoxy

Unit consists of:

- 1 - Wall Track - **SG-WT56GY**
- 2 - Upright - **SG-U31GY**
- 1 - Wire Grid - **SG-3048GY**
- 1 - Drying Rack - **SG-TDR461410GY**
- 2 - Drying Rack - **SG-SLH201412GY**
- 2 - Bottle Holder - **SG-BR6GY**
- 2 - Hook - **SG-HOOK6GY**





Wine Cradle Wire Shelf

NSF

Quantum's NEW Wine Cradle Shelf is a perfect storage solution for all wine enthusiasts. Shelves comes in two sizes: a 36"L that holds up to 9 bottles and a 48"L that holds up to 12 bottles. Available in Chrome and Black Epoxy finishes.

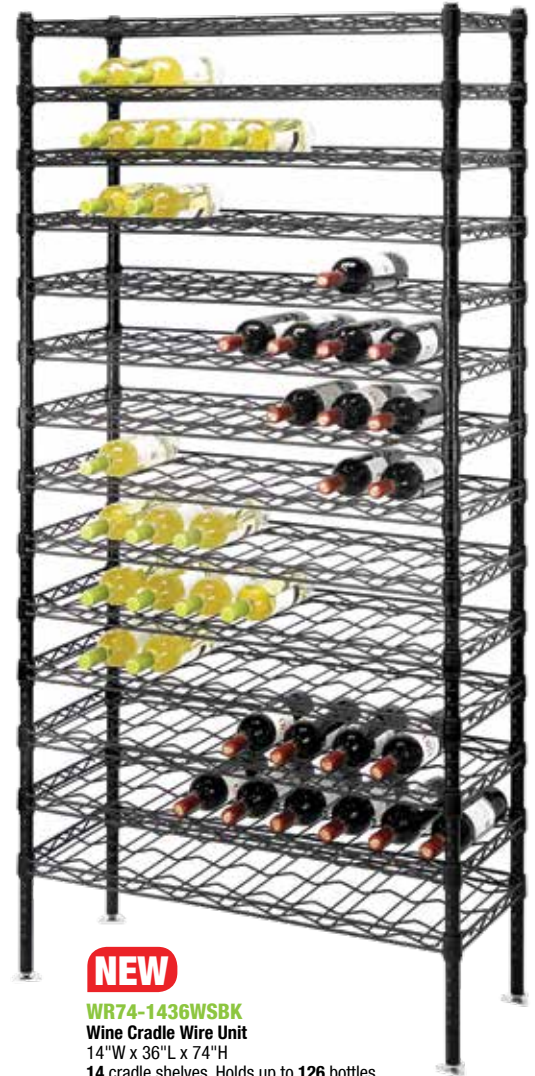
Up to 12
BOTTLES PER SHELF



NEW

1436WSC
1436WSBK
Wine Cradle Wire Shelf
14"W x 36"L

IDEAL STORAGE SOLUTION!



NEW

WR74-1436WSBK
Wine Cradle Wire Unit
14"W x 36"L x 74"H
14 cradle shelves. Holds up to 126 bottles

Wine Cradle Cart

NSF

Excellent mobile storage solution for your wine collection. These carts includes two cradle shelves, a wire or stainless steel top shelf and a bottom wire shelf for additional storage. All units include 4 posts, 4 donut bumpers and 4 casters, 2 with brakes.

Wine Cradle Wire Unit

NSF

The complete storage solution for your location. This beautiful unit can be used in most indoor and/or outdoor settings. Units come with up to 17 cradle shelves and can holds up to 204 bottles, includes 4 posts, foot plates and wall brackets.



NEW

WRC-1436WSBK-1SS
Wine Cradle Cart
14"W x 36"L x 45"H
2 cradle shelves. Holds up to 18 bottles.
1 stainless steel top shelf. 1 wire bottom shelf.

FINISHES:

◆ CHROME ◆ BLACK EPOXY BK

MODEL NO.	DIMENSIONS W" x L" x H"	SHIP WGT
Wine Cradle Wire Shelves		
1436WSC	14" x 36"	7 lbs
1436WSBK	14" x 36"	7 lbs
1448WSC	14" x 48"	9 lbs
1448WSBK	14" x 48"	9 lbs
Wine Cradle Carts		
WRC-1436WSC	14" x 36" x 45"	53 lbs
WRC-1436WSC-1SS	14" x 36" x 45"	58 lbs
WRC-1436WSBK	14" x 36" x 45"	53 lbs
WRC-1436WSBK-1SS	14" x 36" x 45"	58 lbs
Wine Cradle Wire Units		
WR74-1436WSC	14" x 36" x 74"	120 lbs
WR74-1436WSBK	14" x 36" x 74"	120 lbs
WR86-1436WSC	14" x 36" x 86"	145 lbs
WR86-1436WSBK	14" x 36" x 86"	145 lbs
WR74-1448WSC	14" x 48" x 74"	148 lbs
WR74-1448WSBK	14" x 48" x 74"	148 lbs
WR86-1448WSC	14" x 48" x 86"	179 lbs
WR86-1448WSBK	14" x 48" x 86"	179 lbs



CHROME



EPOXY

PERFORMANCE FEATURES:

- Assembles in minutes
- Wire design allows for air circulation and minimal dust buildup
- Shelves easily adjust on 1" centers to your exact needs
- Ideal storage solution for any commercial, office, warehouse or home application
- 1 year limited warranty on Chrome and 15 year limited warranty on Black Epoxy
- Includes posts, shelves, and all needed hardware
- No tools required



3 FINISHES AVAILABLE

Cantilever Single Shelf



Cantilever shelves have a drop mat design that provides a ledge around the shelf. Space-efficient and easy to install. Up to 150 lbs load capacity. **Finishes:** Proform Green, Gray and Black Epoxy

MODEL NO.	DIMENSIONS W" x L"	SHIP WGT
Proform Green Epoxy Cantilever Shelves		
1224RCSP	12" x 24"	5 lbs
1230RCSP	12" x 30"	6 lbs
1236RCSP	12" x 36"	7 lbs
1242RCSP	12" x 42"	8 lbs
1248RCSP	12" x 48"	9 lbs
1260RCSP	12" x 60"	11 lbs
Gray Epoxy Cantilever Shelves		
1224RCSGY	12" x 24"	5 lbs
1230RCSGY	12" x 30"	6 lbs
1236RCSGY	12" x 36"	7 lbs
1242RCSGY	12" x 42"	8 lbs
1248RCSGY	12" x 48"	9 lbs
1260RCSGY	12" x 60"	11 lbs
Black Epoxy Cantilever Shelves		
1224RCSBK	12" x 24"	5 lbs
1230RCSBK	12" x 30"	6 lbs
1236RCSBK	12" x 36"	7 lbs
1242RCSBK	12" x 42"	8 lbs
1248RCSBK	12" x 48"	9 lbs
1260RCSBK	12" x 60"	11 lbs

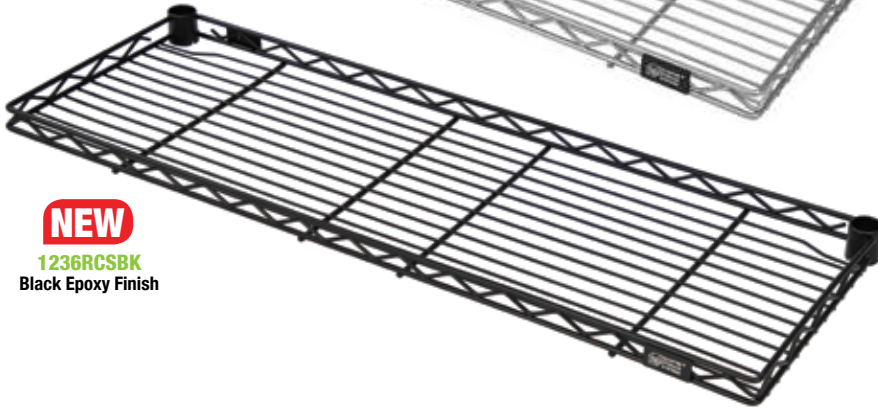
NEW
1236RCSP
Proform Green Epoxy Finish



NEW
1236RCSGY
Gray Epoxy Finish



NEW
1236RCSBK
Black Epoxy Finish



Up to 150 lb.
LOAD CAPACITY PER SHELF

NEED EXTRA SPACE?

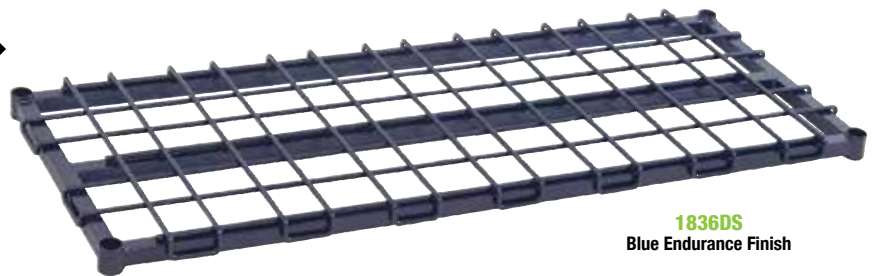
Dunnage Shelves



NEW GRAY EPOXY FINISH

Dunnage shelves are constructed of 1" square tubular steel with removable wire decking. Utilized in extreme load applications. 1,300-1,600 lb. load capacity depending of shelf length. **Finishes:** Blue Endurance or Gray Epoxy - Excellent for high humidity or corrosive applications and is fortified with an anti-microbial agent.

ENDURANCE MODEL NO.	GRAY MODEL NO.	DIMENSIONS W" x L"	SHIP WGT
-	1824DSGY	18" x 24"	14 lbs
-	1830DSGY	18" x 30"	18 lbs
1836DS	1836DSGY	18" x 36"	21 lbs
-	1842DSGY	18" x 42"	25 lbs
1848DS	1848DSGY	18" x 48"	28 lbs
1860DS	1860DSGY	18" x 60"	34 lbs
-	2424DSGY	24" x 24"	16 lbs
-	2430DSGY	24" x 30"	20 lbs
2436DS	2436DSGY	24" x 36"	24 lbs
-	2442DSGY	24" x 42"	28 lbs
-	2448DSGY	24" x 48"	30 lbs
2460DS	2460DSGY	24" x 60"	37 lbs



1836DS
Blue Endurance Finish



NEW
1836DSGY
Gray Epoxy Finish

Up to 1,300-1,600 lb.
LOAD CAPACITY PER SHELF



Corner Wire Shelving



NEW GREEN EPOXY FINISH

When in need of more storage space, Quantum Corner Wire Shelving is the answer. It's great for any corner area. It is versatile and durable, it is easy to assemble. Each shelf holds up to 700 lbs., evenly distributed. This versatile storage option will help your rooms stay neat, organized and maximized.
Finishes: Chrome and Proform Green Epoxy

MOBILIZE YOUR SHELVING

DB - Donut Bumper
Non-marking donut bumper used to protect walls and help cushion impact.



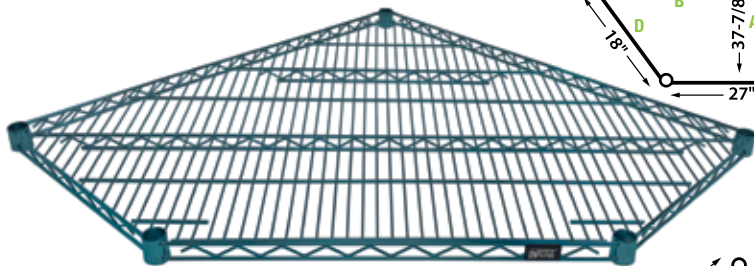
WR-00H-5 (Mobile Kit)

Set of five swivel thermoplastic resin 5" x 1-1/4" casters, two with brakes. Can be used with all units shown. 1,500 lb. load capacity.

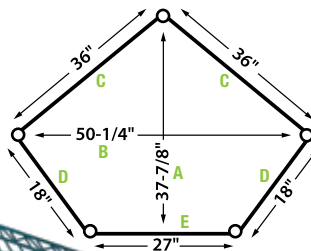
REPLACE SUFFIX "C" AT THE END OF MODEL NO. WITH "P" TO ORDER GREEN EPOXY FINISH

Ex. 1836CRNP
WR74-1836CRNP
WR74-1836CRNP-5

MODEL NO.	SHELF DIMENSIONS A" x B" x C" x D" x E"	SHIP WGT
Corner Wire Shelves		
1836CRNC	37-7/8" x 50-1/4" x 36" x 18" x 27"	16 lbs
2442CRNC	46" x 58-1/2" x 41-3/4" x 24" x 26-1/2"	21 lbs
74"H - Corner Wire Shelving 4 Shelf System		
WR74-1836CRNC	37-7/8" x 50-1/4" x 36" x 18" x 27"	80 lbs
WR74-2442CRNC	46" x 58-1/2" x 41-3/4" x 24" x 26-1/2"	100 lbs
74"H - Corner Wire Shelving 5 Shelf System		
WR74-1836CRNC-5	37-7/8" x 50-1/4" x 36" x 18" x 27"	96 lbs
WR74-2442CRNC-5	46" x 58-1/2" x 41-3/4" x 24" x 26-1/2"	121 lbs



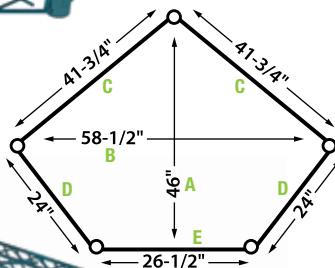
1836CRNP
Corner Wire Shelf Proform Green Epoxy Finish
(Use with 18" deep wire shelving)



Up to 700 lb.
LOAD CAPACITY
PER SHELF



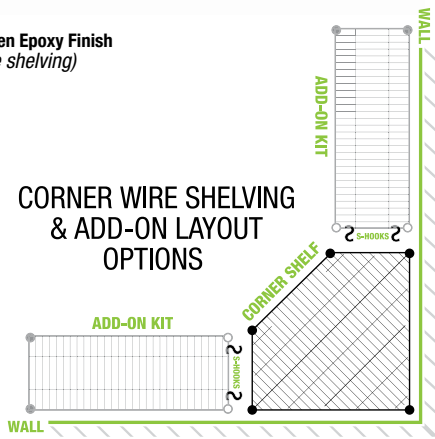
2442CRNP
Corner Wire Shelf Proform Green Epoxy Finish
(Use with 24" deep wire shelving)



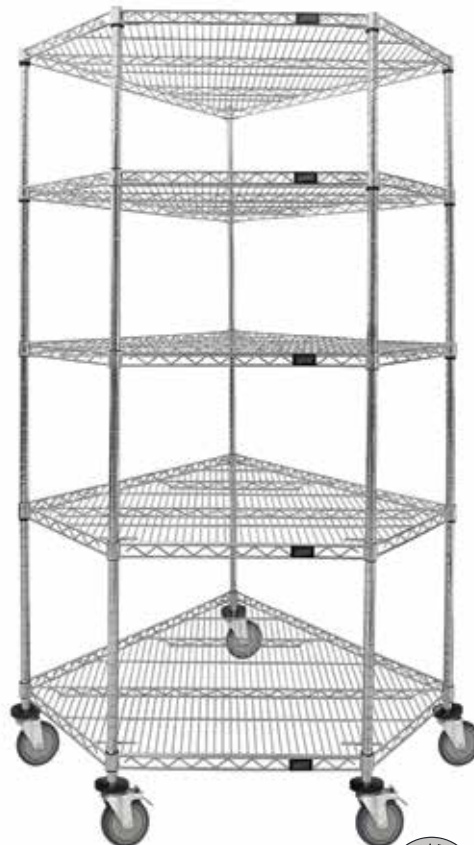
PERFORMANCE FEATURES:

- Up to 700 lb. load capacity per shelf
- Easy assembly with no tools needed
- Compatible with 18" and 24" deep wire shelving add-on units
- Shelves easily adjust on 1" centers to your exact needs
- Ideal storage solution for any commercial, office, warehouse or home application
- Bright chrome finish

CORNER WIRE SHELVING & ADD-ON LAYOUT OPTIONS



NEW
4 SHELF UNIT
Proform Green Epoxy Finish



5 SHELF MOBILE UNIT
Chrome Finish





Mobile To Go



This Mobile To Go station comes with five shelves and is made of black epoxy, which helps packaged stand out making it easier to spot. Eliminate congestion around counter spaces reducing traffic around the register so that customers and delivery drivers may easily pick up their orders in a convenient location. Use the label holders on each shelf to arrange and alphabetize the orders. Adjustable shelves enhance order visibility, accessibility, and security. This station has a pick-up sign to draw customers and delivery people's attention and give them the convenient pick-up experience. **Finish:** Black Epoxy

MODEL NO.	DIMENSIONS W" x L" x H"	SHIP WGT
QTG63-1824BK	18" x 24" x 64"	60 lbs
QTG63-1836BK	18" x 36" x 64"	81 lbs
QTG63-1848BK	18" x 48" x 64"	107 lbs
QTG63-1860BK	18" x 60" x 64"	123 lbs

Up to 800 lb.
LOAD CAPACITY
PER SHELF



EASY TO SPOT

NEW

DRIVE-THRU STATION



NEW

QTG63-1836BK
Black Epoxy Finish

Custom Drive-thru Station

NSF

To create this exact drive-thru station unit you would need to purchase the following parts listed below.

Unit consists of:

- 2 - 74" Post - P74P
- 2 - 34" Post - P34P
- 1 - 24" x 36" Solid Shelf - 2436SG
- 3 - 24" x 36" Wire Shelf - 2436P
- 2 - 18" x 36" Wire Grid - SG-1836P
- 2 - Post Mount Grid Bracket (Pack of 4) - WR-PMGP
- 1 - 14" x 36" Shelf - SG-LS1436P
- 5 - Ultra Bins - QUS230CL
- 5 - Single Bin Holder - SG-SBH
- 3 - Ultra Bins - QUS235CL
- 3 - Small Bin Holder - SG-SMBH



NEW

WR-PMGP
Post Mount
Grid Bracket



TO VIEW OUR FULL PRODUCT LINE

VISIT US ONLINE

Great storage products, delivered quickly at the guaranteed lowest prices. Contact **Quantum Food Service** today and revolutionize the way you organize!



www.mbhny.com

Export Representatives:
MBH International Sales, Inc.
4907 SW 75th Ave.
Miami, FL 33155 USA
Phone: (305) 669-1894
Fax: (305) 669-1797
sales@mbhny.com
www.mbhny.com